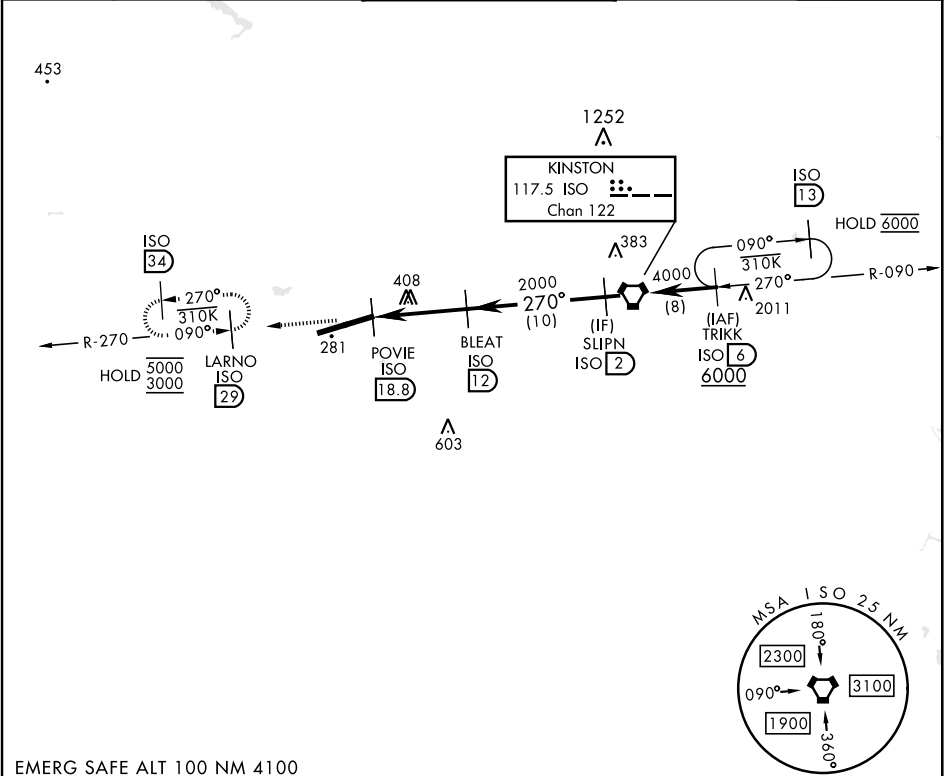


KINSTON ISO 117.5 Chan 122	APCH CRS 270°	Rwy Idg TDZE Arprt Elev N/A N/A 109	[USAF]	SEYMOUR JOHNSON AFB (KGSB)
----------------------------------	------------------	--	--------	----------------------------

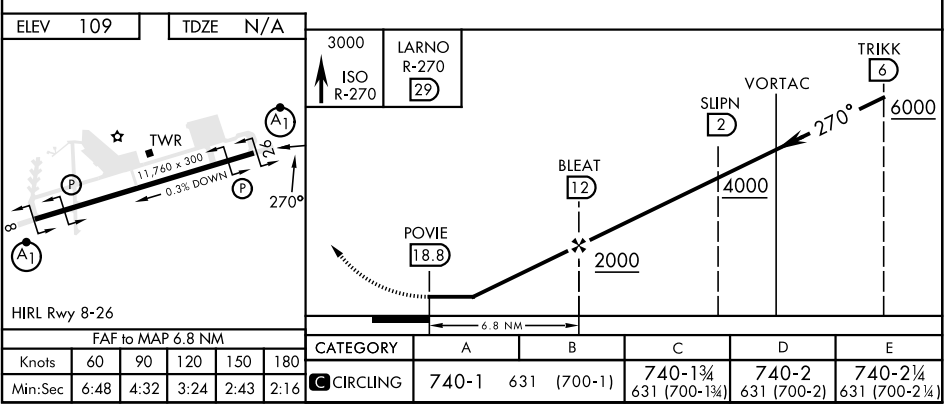
Circling not authorized from Rwy 8 clockwise to RWY 26.

MISSED APPROACH: Climb to 3000 via ISO VORTAC R-270 to LARNO and hold; continue climb-in-hold to 3000.

ATIS ★ 317.625	APP CON 123.7 290.9 (258°-110°) 119.7 273.6 (111°-257°)	TOWER ★ 126.25 370.875	GND CON 132.45 275.8	CLNC DEL 128.025 270.8
-------------------	---	---------------------------	-------------------------	---------------------------



EMERG SAFE ALT 100 NM 4100



SE-2, 07 AUG 2025 to 04 SEP 2025

SE-2, 07 AUG 2025 to 04 SEP 2025