

RNAV (GPS) RWY 8

WAAS CH 63600 W08A	APCH CRS 081°	Rwy ldg TDZE Arprt Elev	11,760 73 109
--------------------------	------------------	-------------------------------	---------------------

- (USAF)

SEYMOUR JOHNSON AFB (KGSB)

RNP APCH-GPS	ALSIF-1 	MISSED APPROACH: Climb to 2300 direct ZILOB and hold.
--------------	--	---

ATIS★ 317.625	APP CON 119.7 273.6 (111° -257°) 123.7 290.9 (258° -110°)	TOWER★ 126.25 370.875	GND CON 132.45 275.8	CLNC DEL 128.025 270.8
------------------	---	--------------------------	-------------------------	---------------------------

319

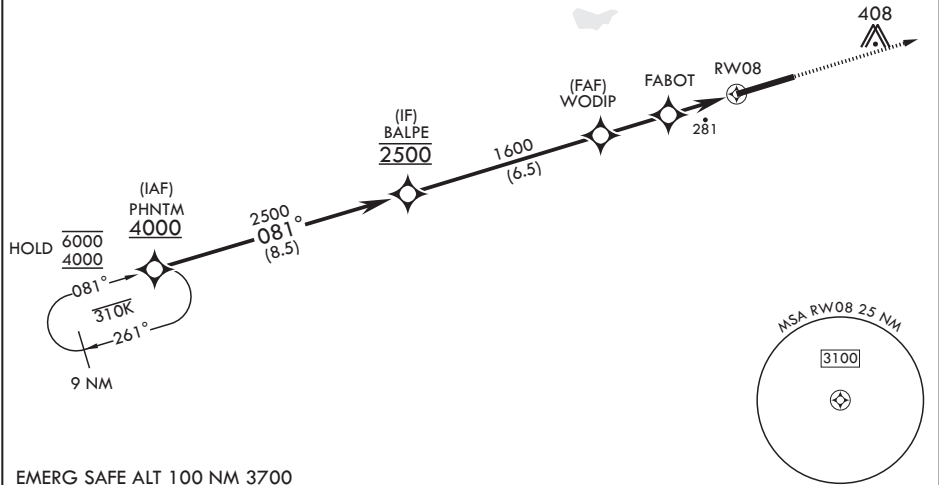
*** When ALS inop, increase CAT
AB RVR to 55, vis to 1 mile;
CAT CDE vis to 1 3/8 miles.

**** Circling NA N of RWY 8-26.

For uncompensated
Baro-VNAV systems,
procedure NA below -15°C
(5°F) or above 54°C (130°F).

MISSED APPROACH 9 NM





EMERG SAFE ALT 100 NM 3700

PHNTM 4000

BALPE 2500

WODIP 1600

FABOT 840

1.3 NM to RWY 8

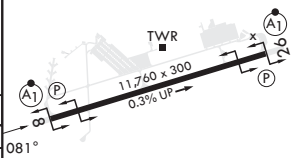
RWY 8 408

GP 3.00°
TCH 55

2.3 NM

2.3 NM

2300 ZILOB ELEV 109 TDZE 73



CATEGORY	A	B	C	D	E
LPV DA*	273/24	200	(200-½)		
LNAV/VNAV DA**	540/50	467	(500-1)		
LNAV MDA***	540/24 467 (500-½)	540/50 467 (500-1)			
CIRCLING****	580-1 471 (500-1)	600-1 491 (500-1)	680-1½ 571 (600-1½)	740-2 631 (700-2)	740-2¼ 631 (700-2¼)

HIRL all Rwy's

RNAV (GPS) RWY 8

SE-2, 07 AUG 2025 to 04 SEP 2025

SE-2, 07 AUG 2025 to 04 SEP 2025