

WAAS CH 95096 W26A	APCH CRS 261°	Rwy ldg TDZE Arprt Elev	11,760 109 109
--	-------------------------	-------------------------------	---

- (USAF)

RNAV (GPS) RWY 26

SEYMOUR JOHNSON AFB (KGSB)

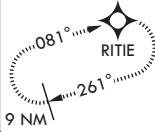
RNP APCH-GPS	ALSIF-1	MISSED APPROACH: Climb to 2200 direct RITIE and hold.
--------------	---------	---

* When ALS inop, increase RVR to 40, vis to 3/4 mile.
** When ALS, inop increase RVR to 60, vis to 1 1/8 miles.

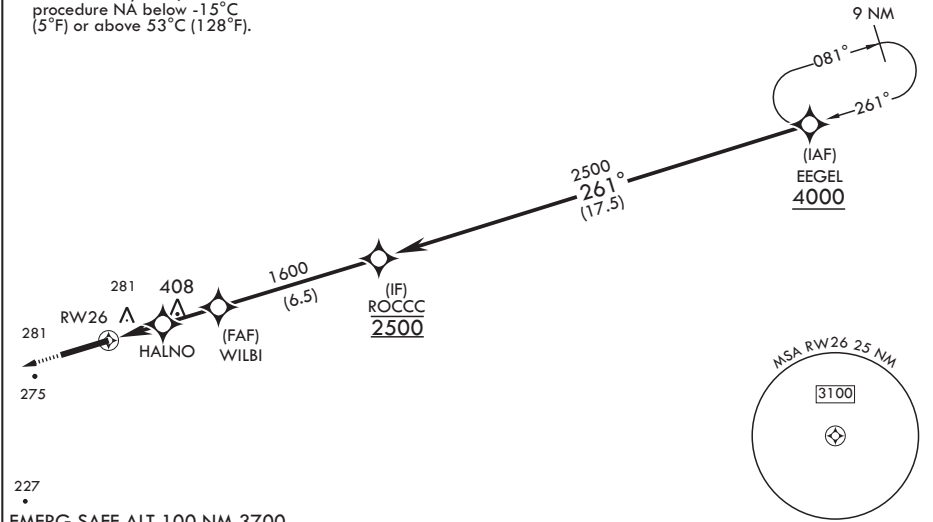
ATIS★ 317.625	APP CON 119.7 273.6 (111° -257°) 123.7 290.9 (258° -110°)	TOWER★ 126.25 370.875	GND CON 132.45 275.8	CLNC DEL 128.025 270.8
-------------------------	---	---------------------------------	--------------------------------	----------------------------------

*** When ALS inop, increase CAT
AB RVR to 55, vis to 1 mile;
CAT CDE vis to 1 1/4 miles.
**** Circling NA N of Rwy 8-26.

MISSED APPROACH



For uncompensated
Baro-VNAV systems,
procedure NA below -15°C
(5°F) or above 53°C (128°F).



EMERG SAFE ALT 100 NM 3700

2200

RITIE

ELEV 109

TDZE 109

ROCCC

261°

4000

2500

WILBI

1600

EEGEL

GP 3.04°

TCH 55

RW26

1.2 NM to RW26

HALNO

860

2.2 NM

2.3 NM

CATEGORY	A	B	C	D	E
LPV DA*	309/24		200	(200-½)	
LNAV/VNAV DA**	510/40		401	(500-¾)	
LNAV MDA***	540/24 431 (500-½)		540/40 431		(500-¾)
CIRCLING****	580-1 471 (500-1)	600-1 491 (500-1)	680-1½ 571 (600-½)	740-2 631 (700-2)	740-2¼ 631 (700-2¼)

RNAV (GPS) RWY 26

SE-2, 07 AUG 2025 to 04 SEP 2025

SE-2, 07 AUG 2025 to 04 SEP 2025