
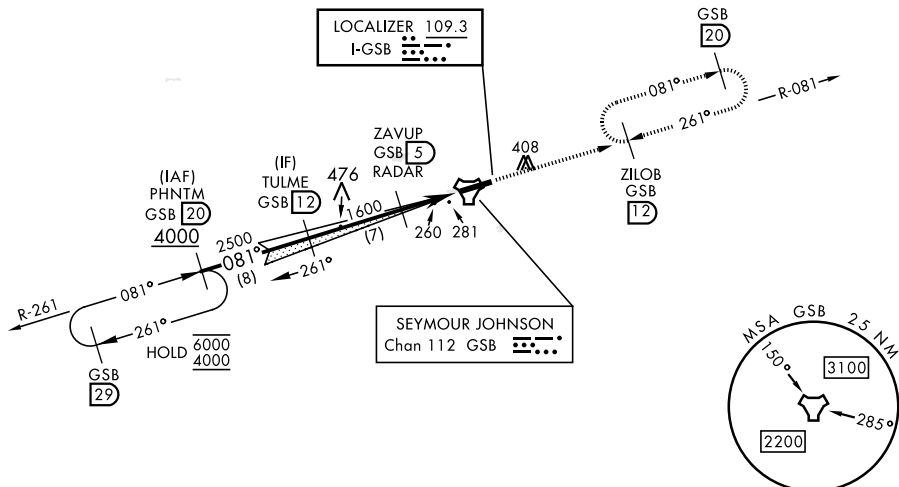


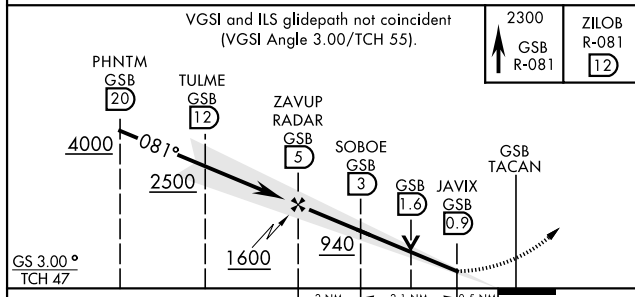
ILS or LOC Y RWY 8

LOC I-GSB <u>109.3</u>	APCH CRS 081°	Rwy Idg 11,760 TDZE 73 Arpt Elev 109	[USAF]	SEYMOUR JOHNSON AFB (KGSB)	
RADAR or DME required.			ALSF-1 	MISSED APPROACH: Climb to 2300 via GSB R-081 to ZLOB and hold.	
<p>▼ * When ALS inop, increase RVR to 40 and vis to ¾ mile.</p> <p>* When ALS inop, increase CAT AB RVR to 55 and vis to 1 mile, CAT CDE vis to 1 ½ miles.</p> <p>*** Circling N of Rwy 8-26 not authorized.</p>					
ATIS ★ 317.625	APP CON 123.7 290.9 (258°-110°) 119.7 273.6 (111°- 257°)		TOWER ★ 126.25 370.875	GND CON 132.45 275.8	CLNC DEL 128.025 270.8

CAUTION: Autopilot coupled operations not authorized below 266' MSL.



EMERG SAFE ALT 100 NM 3700



CATEGORY	2 NM		2.1 NM		0.5 NM	
	A	B	C	D	E	
S-ILS 8 *	273/24		200	(200-½)		
S-LOC 8 **	520/24	447 (500-½)	520/45	447	(500-¾)	
C CIRCLING ***	580-1 471 (500-1)	600-1 491 (500-1)	680-1½ 571 (600-1½)	740-2 631 (700-2)	740-2½ 631 (700-2½)	

