

ILS or LOC Y RWY 26

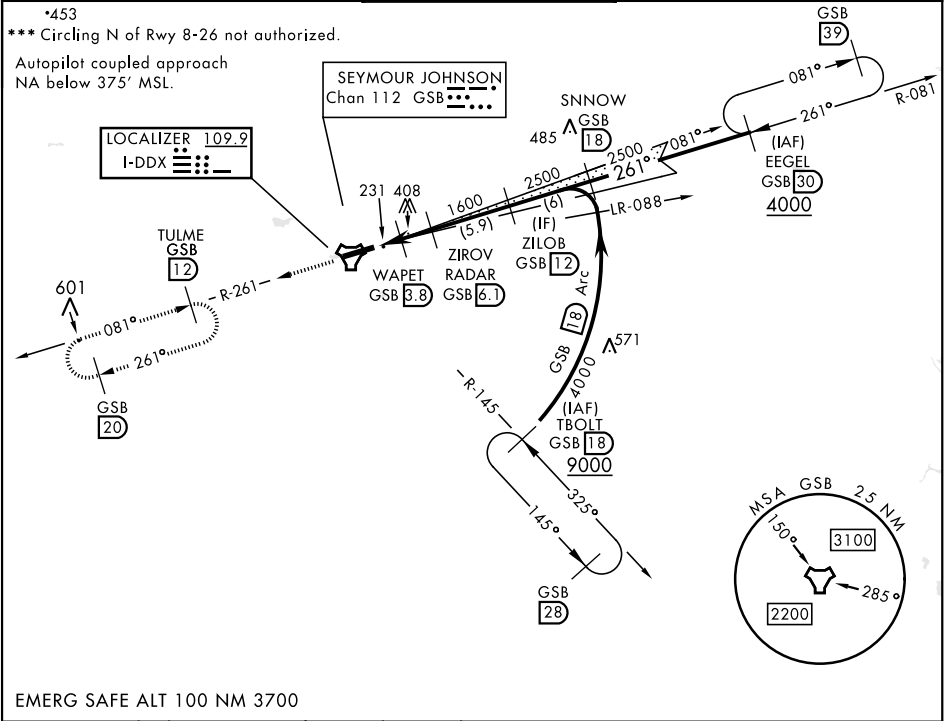
LOC I-DDX 109.9	APCH CRS 261°	Rwy Ldg 11,760 TDZE 109 Arpt Elev 109
---------------------------	-------------------------	---

[USAF]

SEYMOUR JOHNSON AFB (KGSB)

RADAR or DME required		ALSF-1 	MISSED APPROACH: Climb to 2200 via GSB TACAN R-261 to TULME and hold.
* When ALS inop, increase RVR to 40 and vis to ¾ mile. ** When ALS inop, increase CAT AB RVR to 55 and vis to 1 mile, CAT CDE RVR to 60 and vis to 1½ miles.			

ATIS ★ 317.625	APP CON 123.7 290.9 (258°- 110°) 119.7 273.6 (111°- 257°)	TOWER ★ 126.25 370.875	GND CON 132.45 275.8	CLNC DEL 128.025 270.8
--------------------------	---	----------------------------------	--------------------------------	----------------------------------



EMERG SAFE ALT 100 NM 3700

ELEV 109	TDZE 109	2200 GSB R-261	TULME R-261
HRL Rwy 8-26		ZIROV RADAR (6.1) 2500	
FAF to MAP 4 NM		GS 3.00° TCH 54	
		0.6 NM 1.7 NM 2.3 NM	
		CATEGORY A B C D E	
		S-ILS 26* 309/24 200 (200-½)	
		S-LOC 26** 500/24 391 (400-½) 500/35 391 (400-¾)	
Knots 60 90 120 150 180		*** 580-1 600-1 680-1½ 740-2 740-2¼	
Min:Sec 4:00 2:40 2:00 1:36 1:20		471 (500-1) 491 (500-1) 571 (600-½) 631 (700-2) 631 (700-2¼)	
CIRCLING			

ILS or LOC Y RWY 26

SE-2, 07 AUG 2025 to 04 SEP 2025

SE-2, 07 AUG 2025 to 04 SEP 2025