

GOLDSBORO, NORTH CAROLINA

TACAN GSB Chan 112	APCH CRS 081°	Rwy Idg 11,760 TDZE 73 Arprt Elev 109
------------------------------	-------------------------	--

[USAF]

HI-TACAN Z RWY 8

SEYMOUR JOHNSON AFB (KGSB)

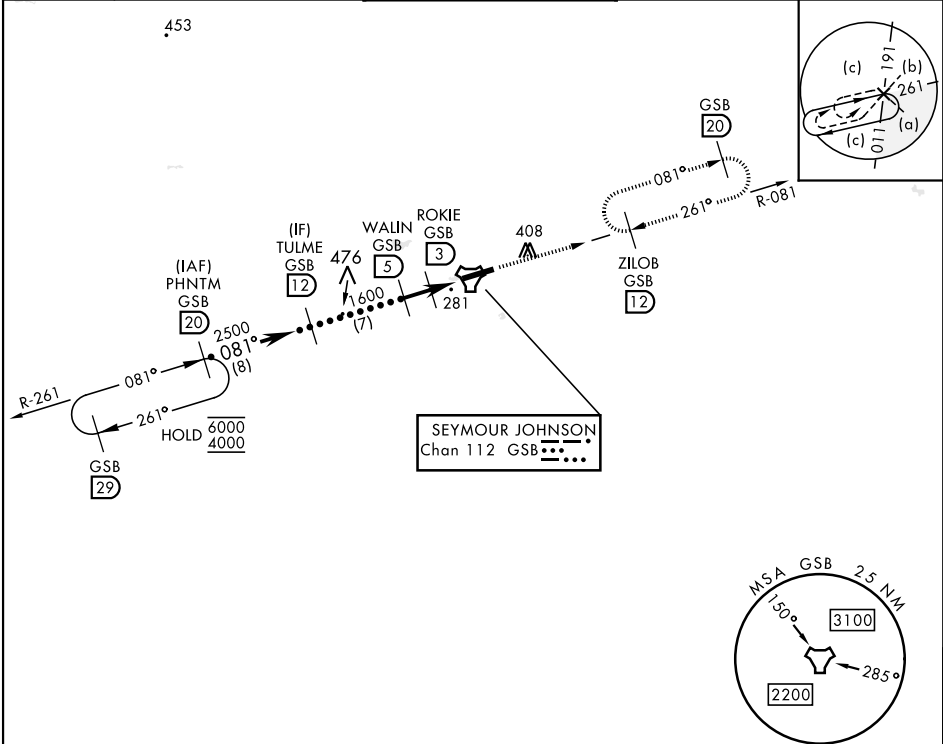
▼

* When ALS inop, increase vis to 1½ miles.
** Circling N of Rwy 8-26 not authorized.

ALSF-1

MISSED APPROACH: Climb to 2300 via GSB TACAN R-081 to ZILOB and hold.

ATIS ★ 317.625	APP CON 123.7 290.9 (258°- 110°) 119.7 273.6 (111°- 257°)	TOWER ★ 126.25 370.875	GND CON 132.45 275.8	CLNC DEL 128.025 270.8
--------------------------	---	----------------------------------	--------------------------------	----------------------------------



EMERG SAFE ALT 100 NM 3700

† WALIN to ZESIX

2300
GSB
R-081

ZILOB
GSB
12

PHNTM
R-261
20

TULME
12

WALIN
5

ROKIE
3

ZESIX
1.7
0.9

TACAN

4000

2500

1600

960

†3.01°
TCH 55

081°

081°

081°

081°

081°

2 NM

2.1 NM

0.5 NM

CATEGORY	C	D	E
S-8 *	540/50	467 (500-1)	
CIRCLING **	680-1½ 571 (600-1½)	740-2 631 (700-2)	740-2¼ 631 (700-2¼)

HIRL Rwy 8-26

GOLDSBORO, NORTH CAROLINA

35° 20' N-77° 58' W

SEYMOUR JOHNSON AFB (KGSB)

Amdt 8 03NOV22

HI-TACAN Z RWY 8