

HI-TACAN Z RWY 26

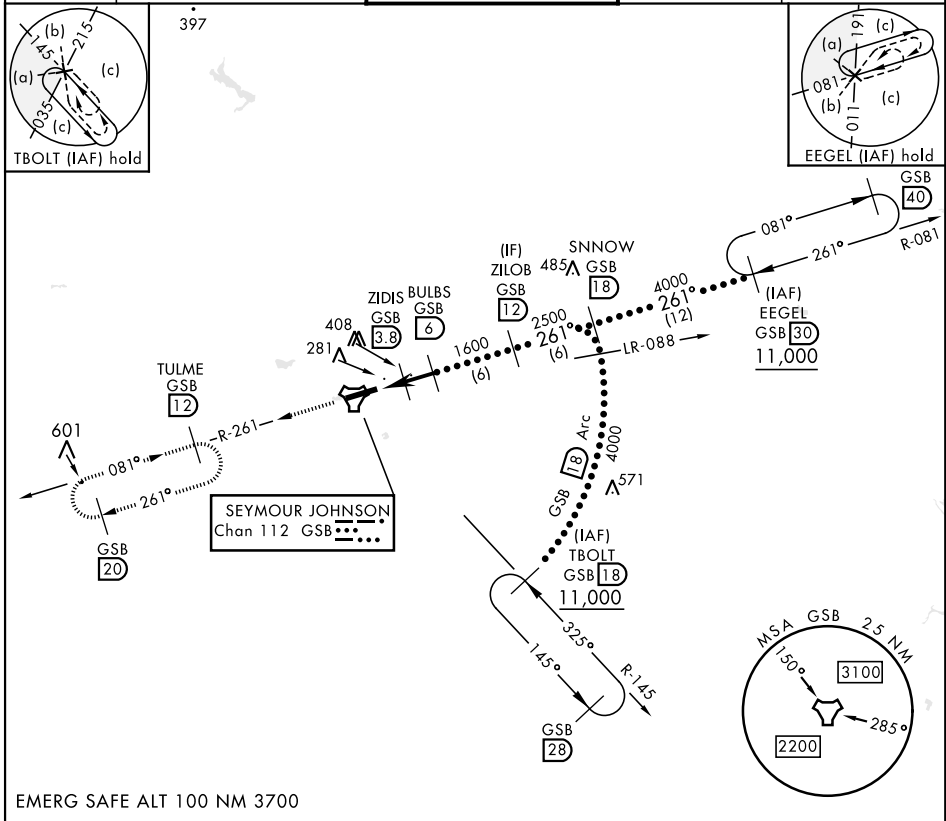
TACAN GSB Chan 112	APCH CRS 261°	Rwy Ldg 11,760 TDZE 109 Arprt Elev 109	[USAF]	SEYMOUR JOHNSON AFB (KGSB)
-----------------------	------------------	--	--------	----------------------------

▼ * When ALS inop, increase vis to 1¼ miles.
** Circling N of Rwy 8-26 not authorized.

ALSF-1
A1

MISSED APPROACH: Climb to 2200 via GSB R-261 to TULME and hold.

ATIS ★ 317.625	APP CON 123.7 290.9 (258°-110°) 119.7 273.6 (111°-257°)	TOWER ★ 126.25 370.875	GND CON 132.45 275.8	CLNC DEL 128.025 270.8
-------------------	---	---------------------------	-------------------------	---------------------------



EMERG SAFE ALT 100 NM 3700

2200 GSB R-261

TULME R-261 12

ZILOB 12

1600

BULBS 6

2500

261°

3.04°

TCH 55

0.6 1.7 NM 2.2 NM

TACAN

COMOZ 2.1 2.7

ZIDIS 3.8

CATEGORY	C	D	E
S-26*	540/40	431 (500-¾)	
** CIRCLING	680-1½ 571 (600-1½)	740-2 631 (700-2)	740-2¼ 631 (700-2¼)

ELEV 109

TDZE 109

11,760 x 300

0.3% DOWN

261°

A1

HI-TACAN Z RWY 26