



GOLDSBORO, NORTH CAROLINA

HI-ILS or LOC Z RWY 8

LOC I- GSB 109.3	APCH CRS 081°	Rwy Idg 11,760 TDZE 73 Arpt Elev 109	[USAF]	SEYMOUR JOHNSON AFB (KGSB)
-----------------------------------	-------------------------	---	--------	----------------------------

RADAR or DME required.

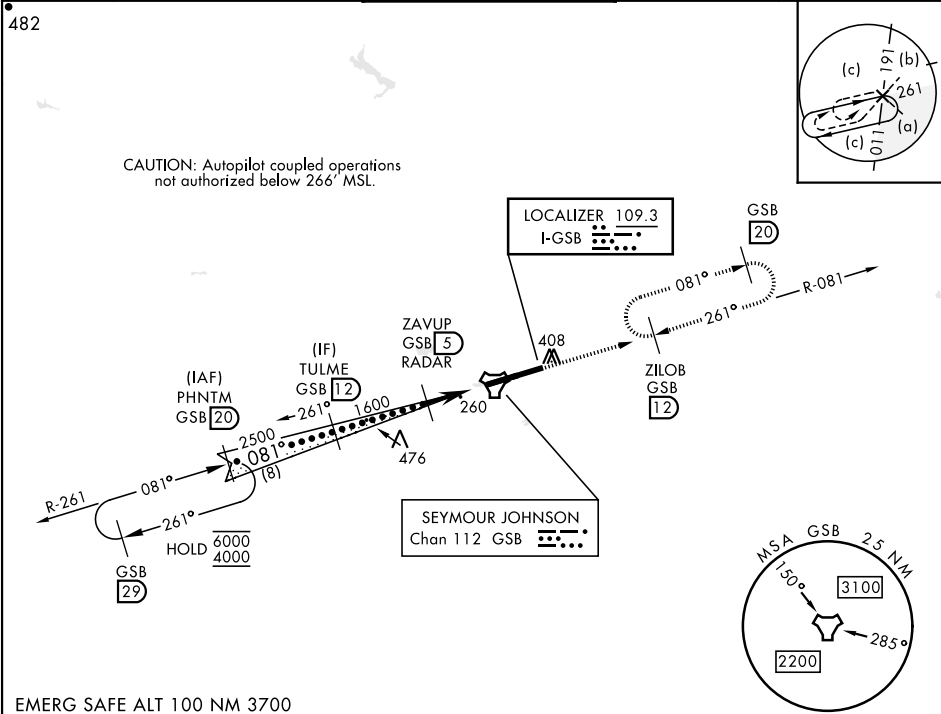
▼ * When ALS inop, increase RVR to 40 and vis to ¾ mile.
** When ALS inop, increase vis to 1 ¾ miles.
*** Circling N of Rwy 8-26 not authorized.

ALSF-1

A1

MISSED APPROACH: Climb to 2300 via GSB R-081 to ZILOB and hold.

ATIS ★ 317.625	APP CON 123.7 290.9 (258°-110°) 119.7 273.6 (111°- 257°)	TOWER ★ 126.25 370.875	GND CON 132.45 275.8	CLNC DEL 128.025 270.8
--------------------------	--	----------------------------------	--------------------------------	----------------------------------



EMERG SAFE ALT 100 NM 3700

VGSI and ILS glidepath not coincident (VGSI Angle 3.00/TCH 55).

PHNTM R-261 GSB 20

TULME GSB 12

ZAVUP RADAR GSB 5

SOBOE GSB 3

GSB 1.6

JAVIX GSB 0.9

GSB TACAN

GS 3.00° TCH 47

4000 2500 1600 940

2 NM 2.1 NM 0.5

2300 GSB R-081

ZILOB R-081 12

ELEV 109 TDZE 73

HIRL Rwy 8-26

FAF to MAP 4.1 NM

Knots	120	140	160	180	200
Min:Sec	2:03	1:45	1:32	1:22	1:14

CATEGORY	C	D	E
S-ILS 8*	273/24	200	(200-½)
S-LOC 8**	520/45	447	(500-¾)
CIRCLING ***	680-1½ 571 (600-1½)	740-2 631 (700-2)	740-2¼ 631 (700-2¼)

GOLDSBORO, NORTH CAROLINA

35° 20' N-77° 58' W

SEYMOUR JOHNSON AFB (KGSB)

Amtd 8 17APR25

HI-ILS or LOC Z RWY 8



SE-2, 07 AUG 2025 TO 04 SEP 2025

SE-2, 07 AUG 2025 TO 04 SEP 2025