

WAAS CH <b>56501</b> <b>W07A</b>	APP CRS <b>069°</b>	Rwy Idg TDZE Apt Elev	<b>8001</b> <b>26</b> <b>26</b>
--	------------------------	-----------------------------	---------------------------------------

RNAV (GPS) RWY 7

BRUNSWICK GOLDEN ISLES (BQK)

RNP APCH.

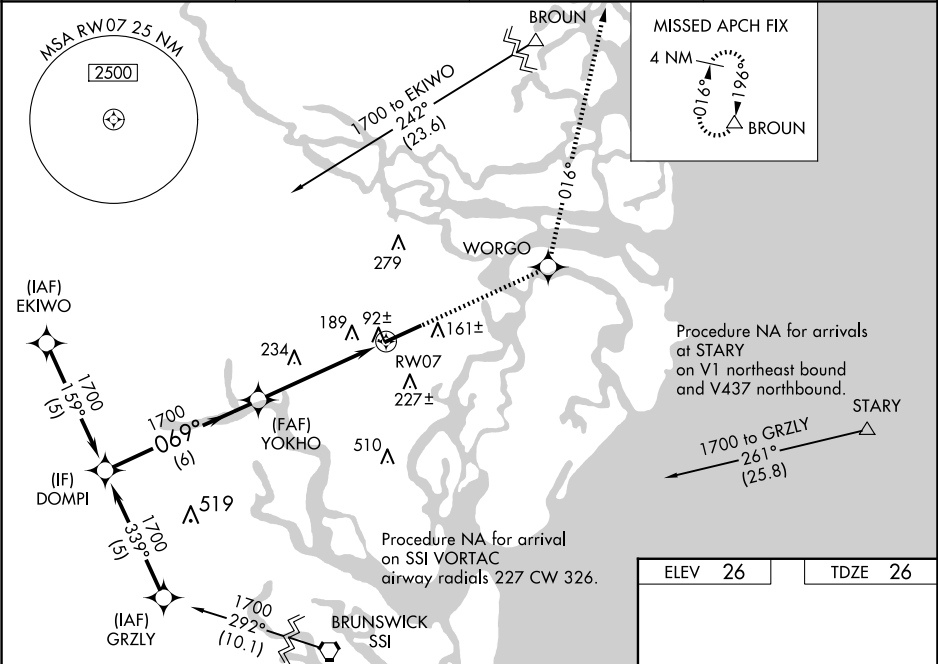
⚠

For uncompensated Baro-VNAV systems, LNAV/VNAV NA below -15°C or above 48°C. VDP and Baro-VNAV NA when using St Simons Island altimeter setting. When local altimeter setting not received, use St Simons Island altimeter setting: increase LPV DA to 245 feet, LNAV/VNAV DA to 505 feet and LNAV/VNAV visibility ½ SM; increase all MDAs 20 feet. For inop ALS, increase LNAV Cat C/D visibility to 1½ SM. For inop ALS when using St Simons Island altimeter setting, increase LNAV/VNAV all Cats and LNAV Cat C/D visibility to 1½ SM.

MALSR

MISSED APPROACH:  
Climb to 3000 direct WORG0 and via track 016° to BROWN and hold.

AWOS-3 <b>124.175</b>	JACKSONVILLE CENTER <b>126.75 277.4</b>	CLNC DEL <b>126.75 277.4</b>	UNICOM <b>123.0 (CTAF) 0</b>
--------------------------	--	---------------------------------	---------------------------------



Procedure Turn NA		DOMPI		YOKHO		3000 ↑		WORG0 ✦		tr 016°		BROWN △	
GP 3.00° TCH 58		1700		1700		*1.3 NM to RW07		*LNAV only.					
		6 NM		3.7 NM		1.3 NM							
CATEGORY		A		B		C		D					
LPV DA				226-½		200 (200-½)							
LNAV/VNAV DA				486-⅞		460 (500-⅞)							
LNAV MDA		500-½		474 (500-½)		500-1		474 (500-1)					
CIRCLING		540-1		514 (600-1)		560-1½ 534 (600-1½)		800-2½ 774 (800-2½)					

ELEV 26

TDZE 26

REIL Rwy 25 0  
HIRL Rwy 7-25 0