

LOC I-BQK

108.5

APP CRS

069°

Rwy Idg

8001

TDZE

26

Apt Elev

26

ILS or LOC RWY 7

BRUNSWICK GOLDEN ISLES (BQK)

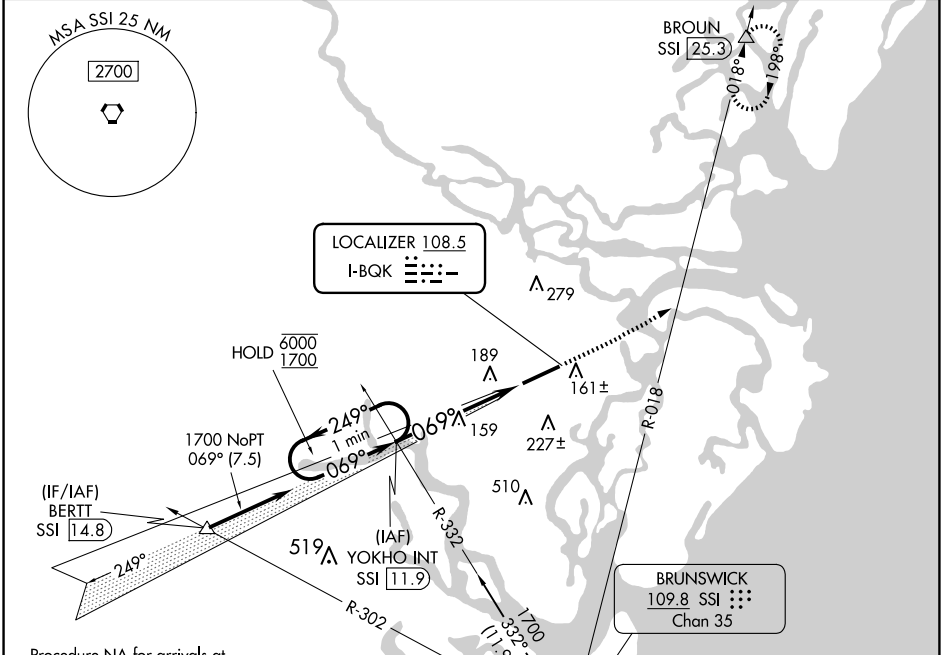
DME required.

For inop ALS , increase S-LOC 7 Cat C/D visibility to 1½ SM.

MALSR

MISSED APPROACH: Climb to 3000 on heading 069° and on SSI VORTAC R-018 to BROWN/SSI 25.3 DME and hold.

AWOS-3 124.175	JACKSONVILLE CENTER 126.75 277.4	CLNC DEL 126.75 277.4	UNICOM 123.0 (CTAF) 0
-------------------	-------------------------------------	--------------------------	--------------------------



Procedure NA for arrivals at BERTT on T425 northwest bound.

One Minute Holding Pattern

YOKHO INT SSI 11.9

1700

3000

hdg 069°

SSI R-018

BROWN

6000

1700

249°

069°

1700

069°

GS 3.00°

TCH 58

5 NM

CATEGORY	A	B	C	D
S-ILS 7	226-½ 200 (200-½)			
S-LOC 7	420-½	394 (400-½)	420-⅝	394 (400-⅝)
CIRCLING	540-1	514 (600-1)	560-1½ 534 (600-1½)	800-2½ 774 (800-2½)

REIL Rwy 25 0

HIRL Rwy 7-25 0

FAF to MAP 5 NM

Knots	60	90	120	150	180
Min:Sec	5:00	3:20	2:30	2:00	1:40