

AL-166

SHAIN TWO ARRIVAL(RNAV) Transition Routes

CHICAGO O'HARE INTL (ORD)
CHICAGO, ILLINOIS

CHICAGO APP CON
119.0 292.125
D-ATIS
135.4 282.225

See following page for
Arrival Routes

-SHAIN
12000

BFORD TRANSITION (BFORD.SHAIN2)
CASHN TRANSITION (CASHN.SHAIN2)
DRAMS TRANSITION (DRAMS.SHAIN2)
FORISTELL TRANSITION (FTZ.SHAIN2)
KIRKSVILLE TRANSITION (IRK.SHAIN2)
LOAMY TRANSITION (LOAMY.SHAIN2)
PNTAC TRANSITION (PNTAC.SHAIN2)
ST LOUIS TRANSITION (STL.SHAIN2)
TRIDE TRANSITION (TRIDE.SHAIN2)
VINCA TRANSITION (VINCA.SHAIN2)
WELTS TRANSITION (WELTS.SHAIN2)

NOTE: RADAR required.

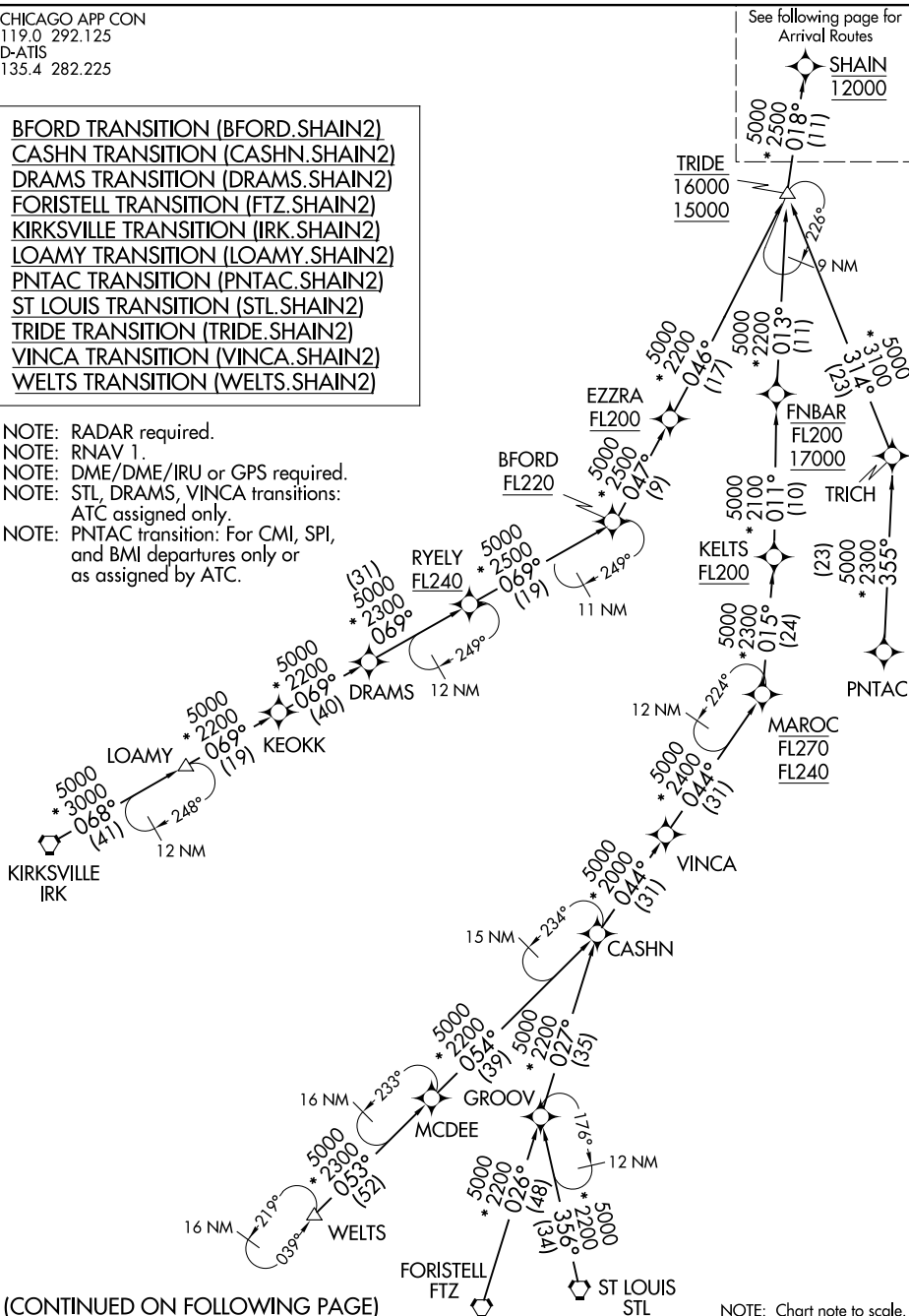
NOTE: RNAV 1.

NOTE: DME/DME/IRU or GPS required.

NOTE: STL, DRAMS, VINCA transitions:

NOTE: ATC assigned only.
PNTAC transition: For CMI, SPI,
and BMI departures only or
as assigned by ATC.

NOTE: PNTAC transition: For CMI, SPI, and BMI departures only or as assigned by ATC.



(CONTINUED ON FOLLOWING PAGE)

NOTE: Chart note to scale.

SHAIN TWO ARRIVAL(RNAV) Transition Routes

CHICAGO, ILLINOIS

(SHAIN.SHAIN2) 05NOV20

CHICAGO O'HARE INTL (ORD)

EC-3, 07 AUG 2025 to 04 SEP 2025

EC-3, 07 AUG 2025 to 04 SEP 2025