

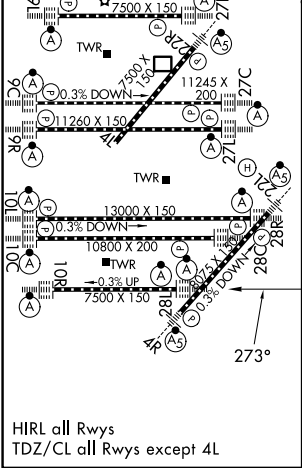
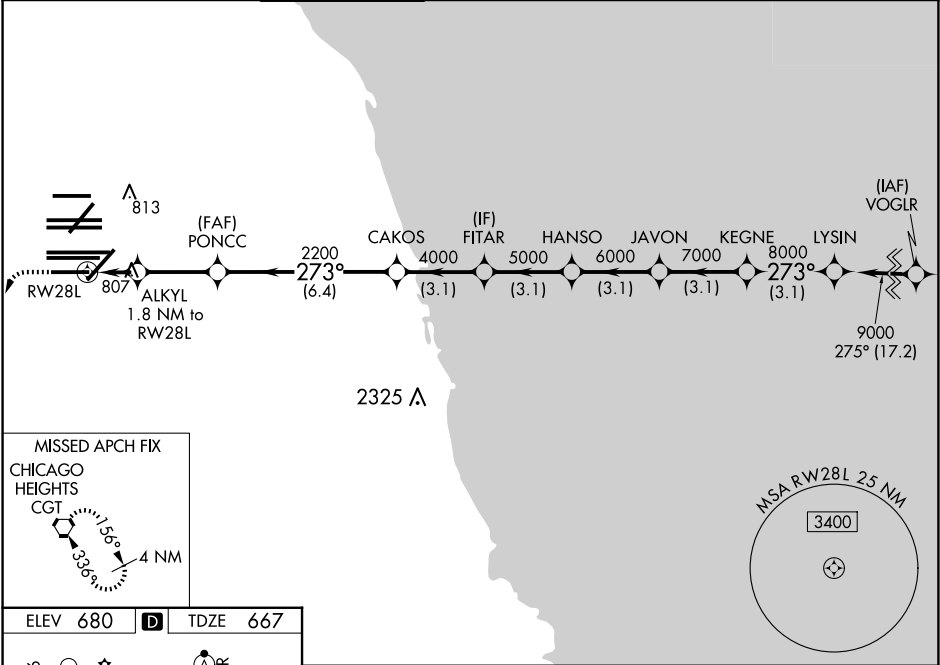


WAAS CH <b>65837</b> <b>W28D</b>	APP CRS <b>273°</b>	Rwy Ldg TDZE Apt Elev	<b>7500</b> <b>667</b> <b>680</b>
--	------------------------	-----------------------------	---

RNAV (GPS) Z RWY 28L

CHICAGO O'HARE INTL (ORD)

RNP APCH.				ALSF-2		MISSED APPROACH: Climb 1200 then climbing left turn to 4000 direct CGT VORTAC and hold.	
<div>Simultaneous approach authorized. LNAV procedure NA during simultaneous operations. For uncompensated Baro-VNAV systems, LNAV/VNAV NA below -19C or above 54C. Use of FD or AP required during simultaneous operations.</div>				<div> </div>			
D-ATIS 135.4 282.225	CHICAGO APP CON 119.0 292.125	O'HARE TOWER 133.0 348.0	GND CON 124.125 (TWR NORTH) 118.05 (TWR SOUTH) 226.675 (ALL TWRs)		(TWR CENTER) 121.75 (OBND) 121.9 (IBND)	CLNC DEL 121.6	CPDLC



ELEV 680		TDZE 667
1200 4000 CGT		
*LNAV only.		
ALKYL 1.8 NM to RWY 28L		
*1.1 NM to RWY 28L		
RWY 28L		
*1280 2200		
1.1 NM 0.7 2.9 NM 6.4 NM 3.1 NM 3.1 NM 3.1 NM 3.1 NM 3.1 NM		
CATEGORY	A	B C D
LPV	DA	867/18 200 (200-1/2)
LNAV/VNAV	DA	1090/40 423 (500-3/4)
LNAV	MDA	1060/24 393 (400-1/2) 1060/35 393 (400-5/8)