

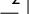

APP CRS
273°

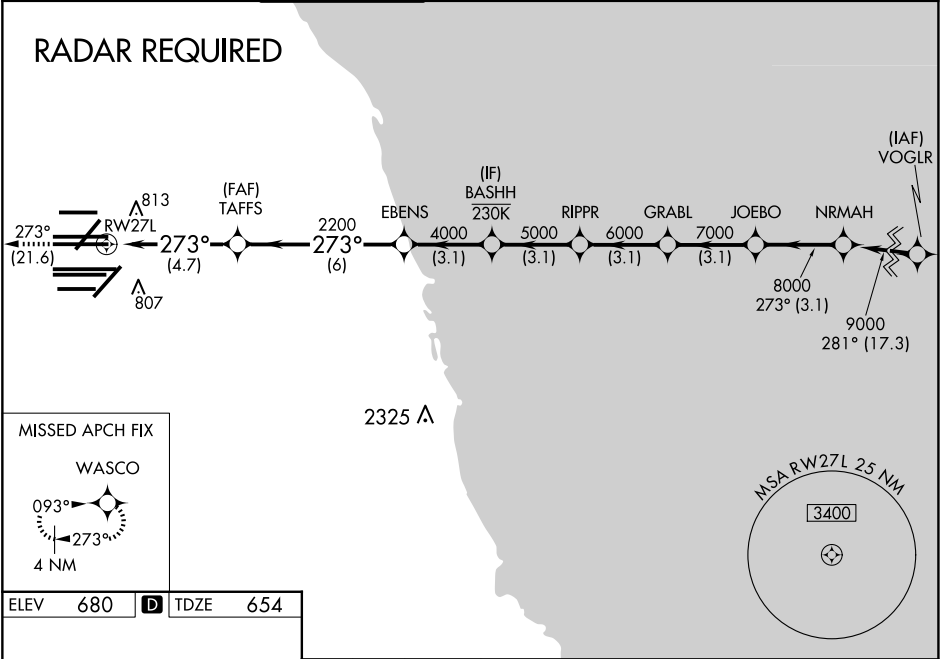
Rwy Ldg
TDZE
Apt Elev

11260
654
680

RNAV (RNP) Y RWY 27L

CHICAGO O'HARE INTL (ORD)

RNP AR APCH - GPS.				<div>ALSF-2</div> <div></div>	MISSED APPROACH: Climb to 4000 on track 273° to WASCO and hold.	
<div> Simultaneous approach authorized. Use of FD or AP required during simultaneous operations. For uncompensated Baro-VNAV systems, procedure NA below -19°C or above 54°C.</div>						
D-ATIS 135.4 282.225	CHICAGO APP CON 119.0 292.125	O'HARE TOWER 126.9 348.0	<div>GND CON</div> <div>124.125 (TWR NORTH) 118.05 (TWR SOUTH) 226.675 (ALL TWRs)</div>	<div>(TWR CENTER)</div> <div>121.75 (OBND) 121.9 (IBND)</div>	CLNC DEL 121.6	CPDLC



 HIRL all Rwys TDZ/CL all Rwys except 4L	<div><div>4000</div><div>↑</div><div>Ir</div><div>273°</div></div> <div><div>WASCO</div><div></div></div> <div><div>VGSI and RNAV glidepath not coincident</div><div>(VGSI Angle 3.00/TCH 77).</div></div>															
	 GP 3.00° TCH 58															
	<table><tr><td>CATEGORY</td><td>A</td><td>B</td><td>C</td><td>D</td></tr><tr><td>RNP 0.15 DA</td><td>989/26</td><td>335 (400-½)</td><td></td><td></td></tr><tr><td>RNP 0.30 DA</td><td>1133/50</td><td>479 (500-1)</td><td></td><td></td></tr></table>	CATEGORY	A	B	C	D	RNP 0.15 DA	989/26	335 (400-½)			RNP 0.30 DA	1133/50	479 (500-1)		
CATEGORY	A	B	C	D												
RNP 0.15 DA	989/26	335 (400-½)														
RNP 0.30 DA	1133/50	479 (500-1)														
	<div>AUTHORIZATION REQUIRED</div>															