

CHICAGO, ILLINOIS

AL-166 (FAA)

## RNAV (GPS) PRM Y RWY 28L

(CLOSE PARALLEL)

CHICAGO O'HARE INTL (ORD)

WAAS CH <b>93839</b> <b>W28E</b>	APP CRS <b>275°</b>	Rwy Ldg <b>7500</b> TDZE <b>667</b> Apt Elev <b>680</b>
--	------------------------	---

RNP APCH. RADAR required.

**T** For uncompensated Baro-VNAV systems, LNAV/VNAV NA below -19°C or above 54°C. Simultaneous approach authorized. Use of FD or AP required during simultaneous operations. Dual VHF comm required. See additional requirements on AAUP.

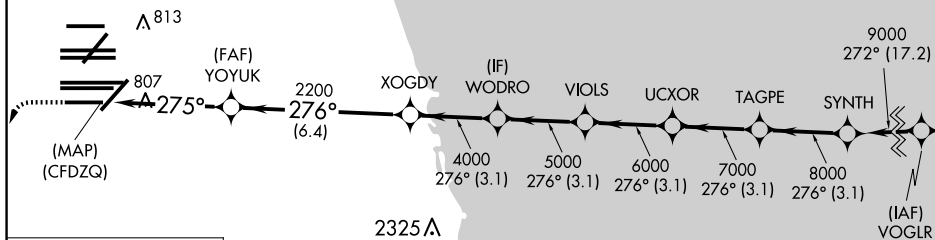
ALSF-2



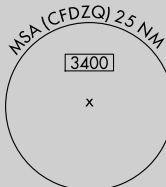
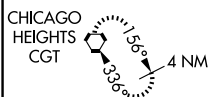
**MISSED APPROACH:** Climb to 1200 then climbing left turn to 4000 direct CGT VORTAC and hold.

D-ATIS 135.4 282.225	CHICAGO APP CON 119.0 292.125	O'HARE TOWER 133.0 348.0 PRM 128.05	GND CON 124.125 (TWR NORTH) 118.05 (TWR SOUTH) 226.675 (ALL TWRs)	(TWR CENTER) 121.75 (OBND) 121.9 (IBND)	CLNC DEL 121.6	CPDLC
----------------------------	-------------------------------------	---	--	---	-------------------	-------

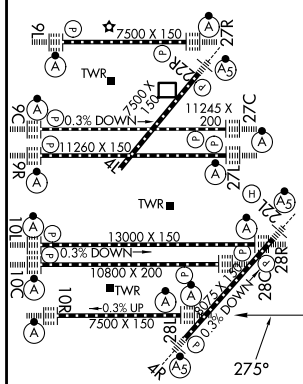
Final approach course offset 2.50°.



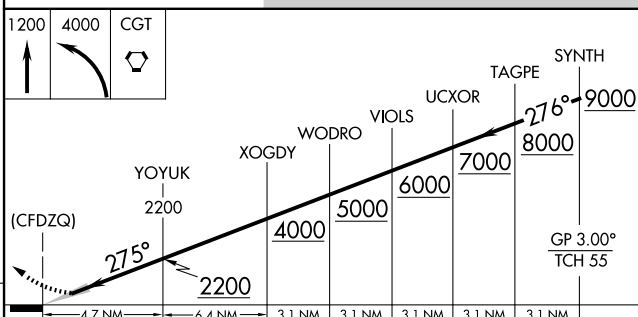
MISSED APCH FIX



ELEV	680	<b>D</b>	TDZE	667
------	-----	----------	------	-----



HIRL all Rwys  
TDZ/CL all Rwys except 4L



CATEGORY		A	B	C	D
LPV	DA	917/24		250 (300÷½)	
LNAV/ VNAV	DA	1090/40		423 (500÷¾)	

CHICAGO, ILLINOIS

41°59'N-87°54'W

CHICAGO O'HARE INTL (ORD)

Orig-A 13SEP18

## RNAV (GPS) PRM Y RWY 28L (CLOSE PARALLEL)