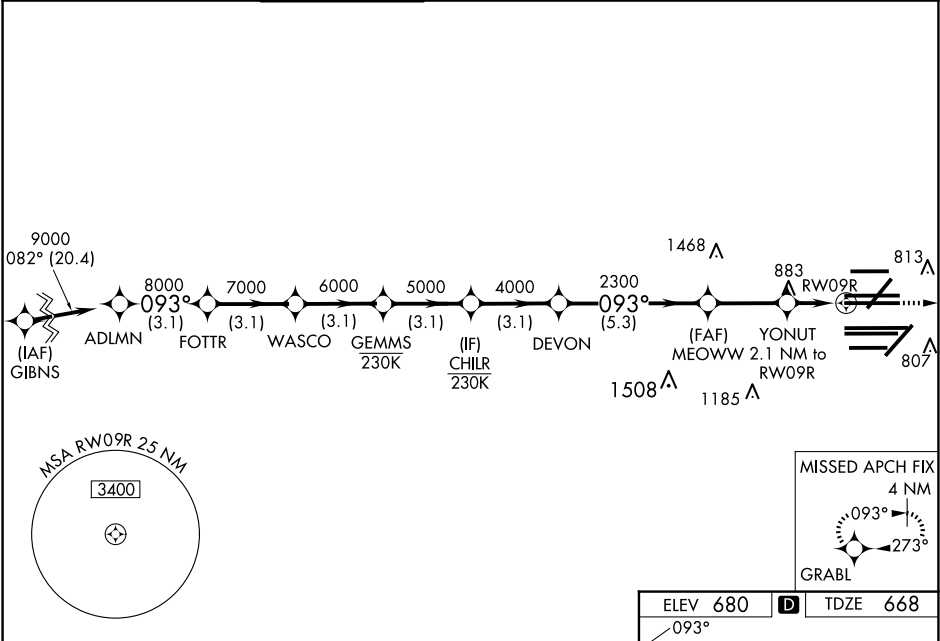


WAAS CH <b>78204</b> <b>W09A</b>	APP CRS <b>093°</b>	Rwy Ldg <b>11260</b> TDZE <b>668</b> Apt Elev <b>680</b>
--	------------------------	--

RNAV (GPS) RWY 9R

CHICAGO O'HARE INTL (ORD)

RNP APCH - GPS.		Simultaneous approach authorized. LNAV procedure NA during simultaneous operations. Use of FD or AP required during simultaneous operations. For uncompensated Baro-VNAV systems, LNAV/VNAV NA below -19°C or above 54°C. For inop ALS, increase LNAV/VNAV all Cats visibility to RVR 4500. For inop ALS, increase LNAV Cats C/D visibility to 1 $\frac{3}{8}$ SM.		MISSED APPROACH: Climb to 4000 direct GRABL and hold.	
D-ATIS <b>135.4</b> <b>282.225</b>	CHICAGO APP CON <b>119.0 292.125</b>	O'HARE TOWER <b>126.9 348.0</b>	GND CON <b>124.125</b> (TWR NORTH) <b>118.05</b> (TWR SOUTH) <b>226.675</b> (ALL TWRs)	(TWR CENTER) <b>121.75</b> (OBND) <b>121.9</b> (IBND)	CLNC DEL <b>121.6</b>
CPDLC					



VGSI and RNAV glidepath not coincident (VGSI Angle 3.00/TCH 76).							<div>4000</div> <div>GRABL</div>	
ADLMN	FOTTR	WASCO	GEMMS	CHILR	DEVON	MEOWW	YONUT	
9000	8000	7000	6000	5000	4000	2300	2.1 NM to RW09R	
GP 3.00° TCH 58						2300	1.2 NM to RW09R	
→	3.1 NM	3.1 NM	3.1 NM	3.1 NM	3.1 NM	5.3 NM	2.8 NM	0.9 1.2 NM
CATEGORY	A		B		C		D	
LPV DA	868/18				200 (200-½)			
LNAV/ VNAV DA	976/24				308 (300-½)			
LNAV MDA	1140/24		472 (500-½)		1140/50		472 (500-1)	

