

WAAS CH 70643 W27D	APP CRS 273°	Rwy Ldg 11245 TDZE 653 Apt Elev 680
--	------------------------	--

RNAV (GPS) RWY 27C
CHICAGO O'HARE INTL (ORD)

RNP APCH.

T Simultaneous approach authorized. LNAV procedure NA during simultaneous operations. Use of FD or AP required during simultaneous operations. For uncompensated Baro-VNAV systems, LNAV/VNAV NA below -19°C or above 54°C. For inop ALS, increase LNAV Cat C/D visibility to RVR 6000.

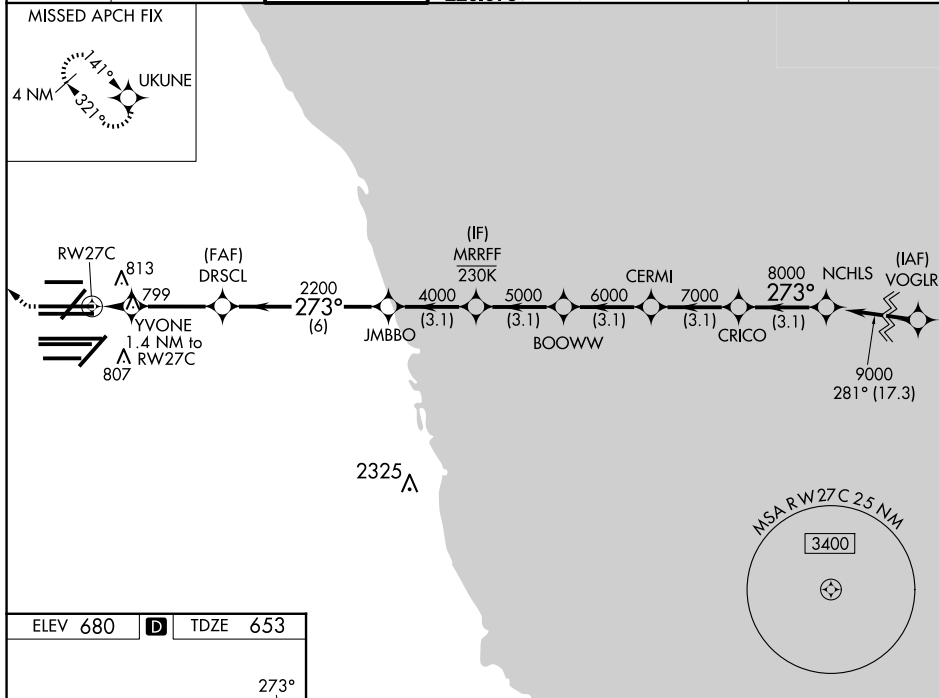
ALSF-2



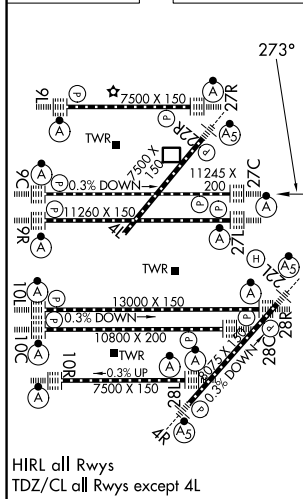
MISSED APPROACH:
Climb to 1100 then
climbing right turn to
4000 direct UKUNE
and hold.

D-ATIS 135.4 282.225	CHICAGO APP CON 119.0 292.125	O'HARE TOWER 121.15 348.0	GND CON (TWR NORTH) 124.125 (TWR SOUTH) 118.05 (ALL TWRs) 226.675	(TWR CENTER) 121.75 (OBND) 121.9 (IBND)	CLNC DEL 121.6	CPDLC
--	--	-------------------------------------	---	---	--------------------------	-------

MISSED APCH FIX



ELEV 680	D	TDZE 653
----------	----------	----------



CHICAGO, ILLINOIS

Orig 05NOV20

41°59'N-87°54'W

CHICAGO O'HARE INTL (ORD)
RNAV (GPS) RWY 27C

EC-3, 07 AUG 2025 to 04 SEP 2025