

WAAS CH <b>90504</b> <b>W22A</b>	APP CRS <b>223°</b>	Rwy Ldg TDZE <b>652</b> Apt Elev <b>680</b>
--	------------------------	---

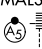
RNAV (GPS) RWY 22R

CHICAGO O'HARE INTL (ORD)

⚠

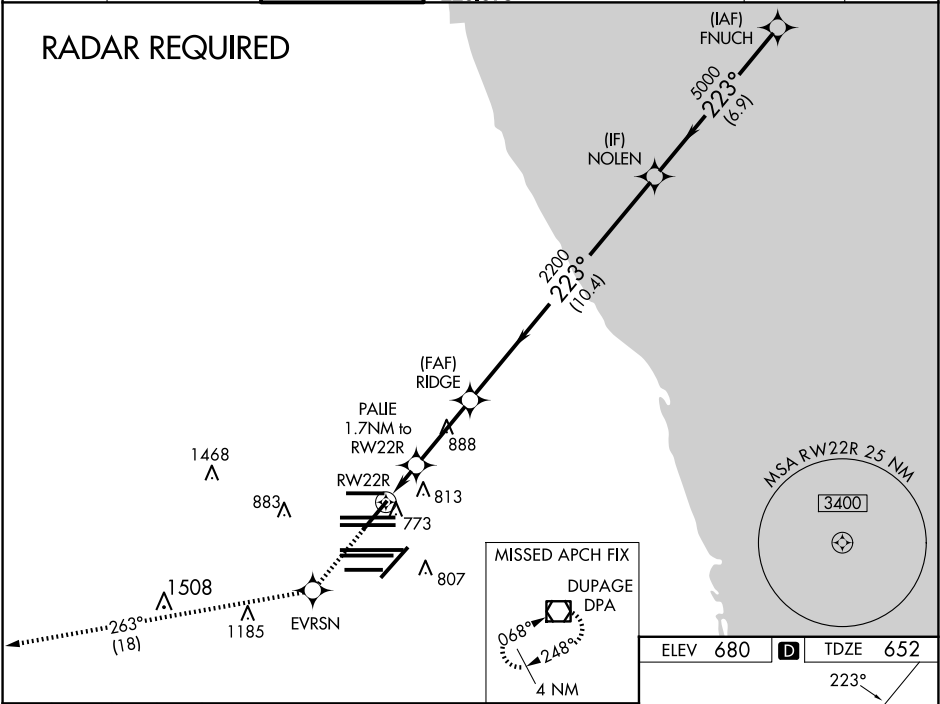
For uncompensated Baro-VNAV systems, LNAV/VNAV NA below -22°C (-7°F) or above 39°C (102°F). Simultaneous approach authorized with Rwy 22L. DME/DME RNP-0.3 NA. LNAV procedure NA during simultaneous operations. Use of FD or AP providing RNAV track guidance required during simultaneous operations.


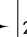

MALSR



MISSED APPROACH: Climb to 4000 direct EVRSN and on track 263° to DPA VOR/DME and hold.

D-ATIS <b>135.4</b> <b>282.225</b>	CHICAGO APP CON <b>119.0 292.125</b>	O'HARE TOWER <b>126.9 348.0</b>	GND CON <b>124.125</b> (TWR NORTH) <b>118.05</b> (TWR SOUTH) <b>226.675</b> (ALL TWRs)	(TWR CENTER) <b>121.75</b> (OBND) <b>121.9</b> (IBND)	CLNC DEL <b>121.6</b>	CPDLC
--	--	------------------------------------	---	---	--------------------------	-------



4000	EVRSN	fr	DPA	VGSI and RNAV glidepath not coincident (VGSI Angle 3.00/TCH 69°).				FNUCH
		263°						
* LNAV only.								
PALIE 1.7 NM to RW22R				RIDGE	NOLEN			7000
* 1 NM to RW22R				2200				
RW22R				* 1200	2200	223°		5000
-1 NM				0.7	3 NM	10.4 NM	6.9 NM	GP 3.00° TCH 49
CATEGORY	A		B		C		D	
LPV DA			852/18		200 (200-½)			
LNAV/ VNAV DA			972/32		320 (300-¾)			
LNAV MDA	1040/24		388 (400-½)		1040/35		388 (400-¾)	
CIRCLING	1220-1		540 (600-1)		1220-1½ 540 (600-1½)		1460-2½ 780 (800-2½)	

