
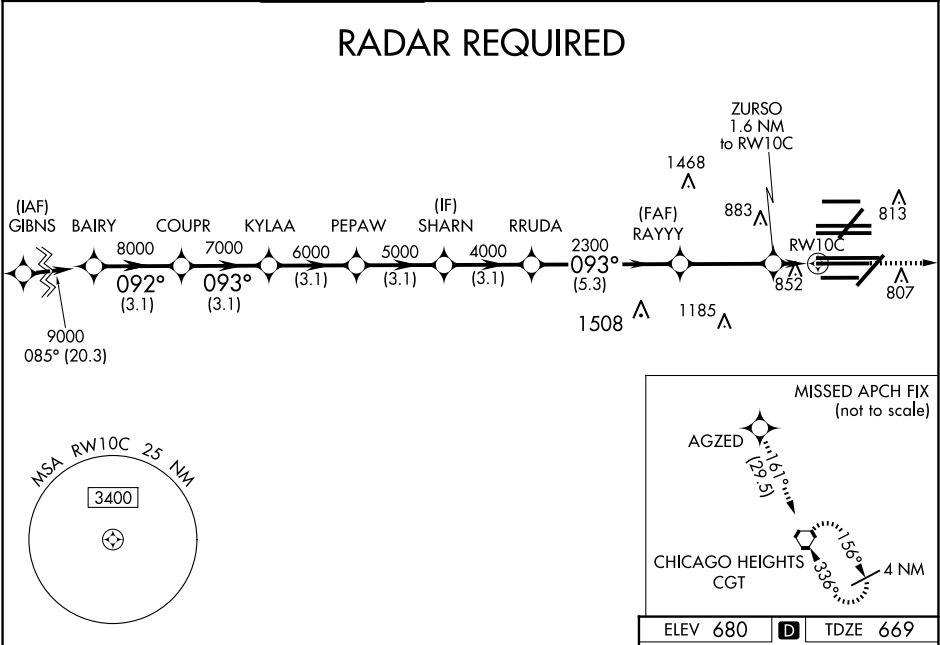


WAAS CH <b>81934</b> <b>W10B</b>	APP CRS <b>093°</b>	Rwy Ldg <b>10540</b> TDZE <b>669</b> Apt Elev <b>680</b>
--	------------------------	--

RNAV (GPS) RWY 10C

CHICAGO O'HARE INTL (ORD)

RNP APCH - GPS.				ALSF-2		MISSED APPROACH: Climb to 4000 direct AGZED and on track 161° to CGT VORTAC and hold.	
<div>⚠ Simultaneous approach authorized. For uncompensated Baro-VNAV systems, LNAV/VNAV NA below -19°C or above 54°C. LNAV procedure NA during simultaneous operations. Use of FD or AP required during simultaneous operations. Rwy 10C helicopter visibility reduction below RVR 4000 NA.</div>				<div></div>			
D-ATIS 135.4 282.225	CHICAGO APP CON 119.0 292.125	O'HARE TOWER 120.75 348.0	GND CON 124.125 (TWR NORTH) 118.05 (TWR SOUTH) 226.675 (ALL TWRs)		(TWR CENTER) 121.75 (OBND) 121.9 (IBND)	CLNC DEL 121.6	CPDLC



VGSI and RNAV glidepath not coincident (VGSI Angle 3.00/TCH 75).						<div>4000</div> <div>↑</div>	<div>AGZED</div> <div>✦</div>	<div>tr 161°</div> <div></div>	<div>CGT</div> <div>◻</div>	
---	--	--	--	--	--	------------------------------	-------------------------------	--------------------------------	-----------------------------	--