

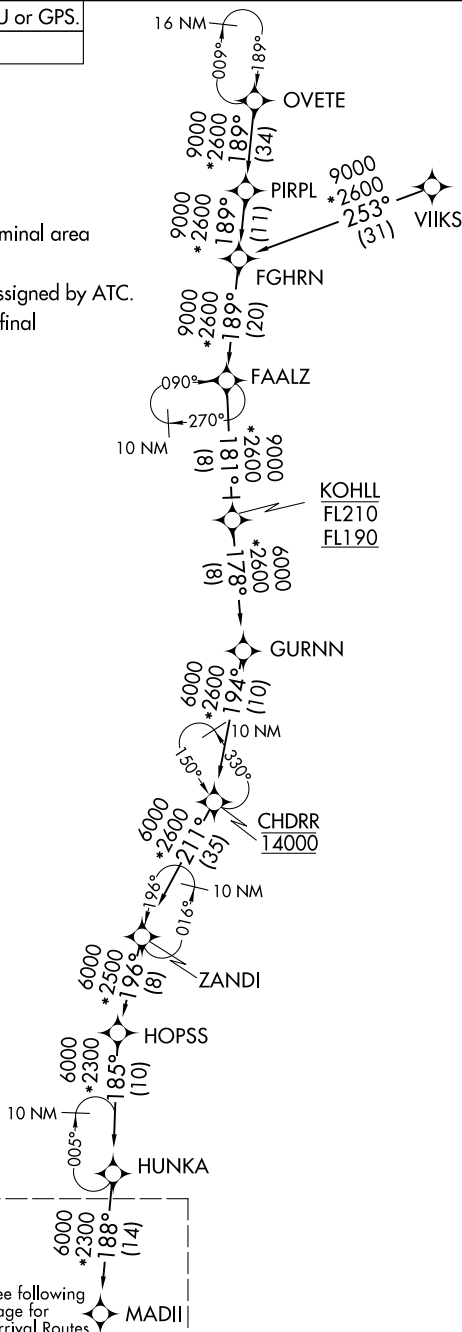
AL-166 (FAA)

CHICAGO O'HARE INTL (ORD)
CHICAGO, ILLINOIS

RNAV 1 - DME/DME/IRU or GPS.
RADAR required.

NOTE: ORD landing east: Expect RADAR vectors to final approach course after MADII.

CHDRR TRANSITION (CHDRR.MADI17):
 FAALZ TRANSITION (FAALZ.MADI17):
 FGHRN TRANSITION (FGHRN.MADI17):
 KOHLL TRANSITION (KOHLL.MADI17):
 OVETE TRANSITION (OVETE.MADI17):
 PIRPL TRANSITION (PIRPL.MADI17):
 VIKKS TRANSITION (VIKKS.MADI17):
 ZANDI TRANSITION (ZANDI.MADI17):



NOTE: Chart not to scale.

See following
page for
Arrival Routes

CHICAGO, ILLINOIS
CHICAGO O'HARE INTL (ORD)

(MADII.MADII7) 20APR23

EC-3, 07 AUG 2025 to 04 SEP 2025