

CHICAGO, ILLINOIS

AL-166 (FAA)

ILS PRM RWY 10C (CAT II & III) (CLOSE PARALLEL)

CHICAGO O'HARE INTL (ORD)

| | | |
|--|------------------------|--|
| LOC/DME I-SXH 108.95 Chan 26(Y) | APP CRS 093° | Rwy Ldg 10540 TDZE 669 Apt Elev 680 |
|--|------------------------|--|

RNAV 1-GPS or RADAR required for procedure entry. DME or RADAR required.

From GIBNS: RNAV-1 GPS required.

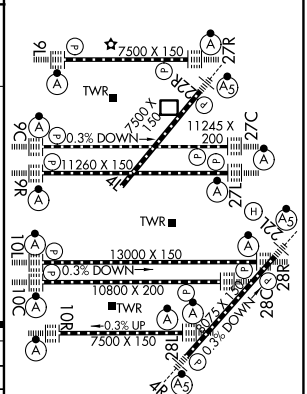
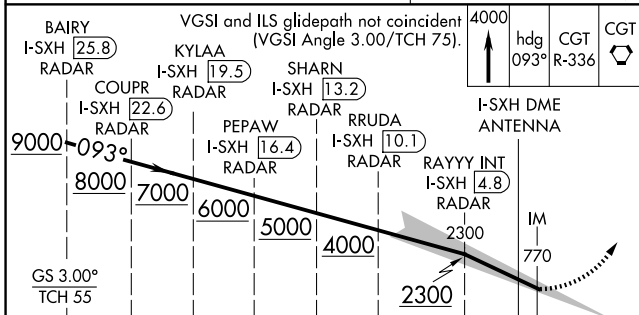
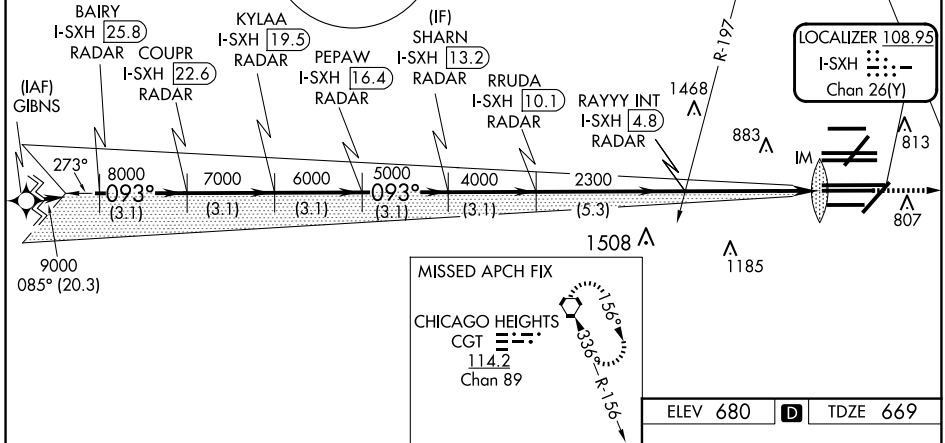
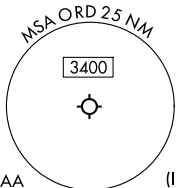
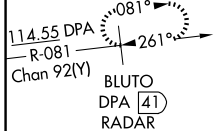
▼ CAT II: RVR 1000 authorized with specific OPSPEC, MSPEC, or LOA approval and use of Autoland or HUD touchdown.
Simultaneous approach authorized. Use of FD or AP required during simultaneous operations. Dual VHF comm required. See additional requirements on AAUP.



MISSED APPROACH: Climb to 4000 on heading 093° and CGT VORTAC R-336 to CGT VORTAC and hold.

| | | | | | | |
|--|---|---|---|---|--------------------------|-------|
| D-ATIS 135.4 282.225 | CHICAGO APP CON 119.0 292.125 | O'HARE TOWER 120.75 348.0 PRM 119.625 | GND CON 124.125 (TWR NORTH) 118.05 (TWR SOUTH) 226.675 (ALL TWRs) | (TWR CENTER) 121.75 (OBND) 121.9 (IBND) | CLNC DEL 121.6 | CPDLC |
|--|---|---|---|---|--------------------------|-------|

ALTERNATE MISSED
APCH FIX



| | | | | |
|-----------|-----------------------------|---|---|---|
| CATEGORY | A | B | C | D |
| S-ILS 10C | CAT II RA 102/12 100 DA 769 | | | |
| S-ILS 10C | CAT III RVR 06 | | | |

**CATEGORY II and III ILS - SPECIAL AIRCREW
& AIRCRAFT CERTIFICATION REQUIRED**

HIRL all Rwy
TDZ/CL all Rwy except 4L

CHICAGO, ILLINOIS
Amdt 1A 03JAN19

41°59'N-87°54'W

CHICAGO O'HARE INTL (ORD)

ILS PRM RWY 10C (CAT II & III) (CLOSE PARALLEL)