

LOC/DME I-SXH 108.95 Chn 26(Y)	APP CRS 093°	Rwy Ldg 10540 TDZE 669 Apt Elev 680
---	------------------------	--

ILS PRM RWY 10C
(CLOSE PARALLEL)

CHICAGO O'HARE INTL (ORD)

RNAV 1-GPS or RADAR required for procedure entry. DME or RADAR required.
--

From GIBNS: RNAV-1 GPS required.

T Simultaneous approach authorized.
Use of FD or AP required during simultaneous operations.
Dual VHF comm required. See additional requirements on AAUP.

ALSF-2

MISSED APPROACH: Climb to 4000 on heading 093° and CGT VORTAC R-336 to CGT VORTAC and hold.

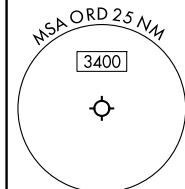
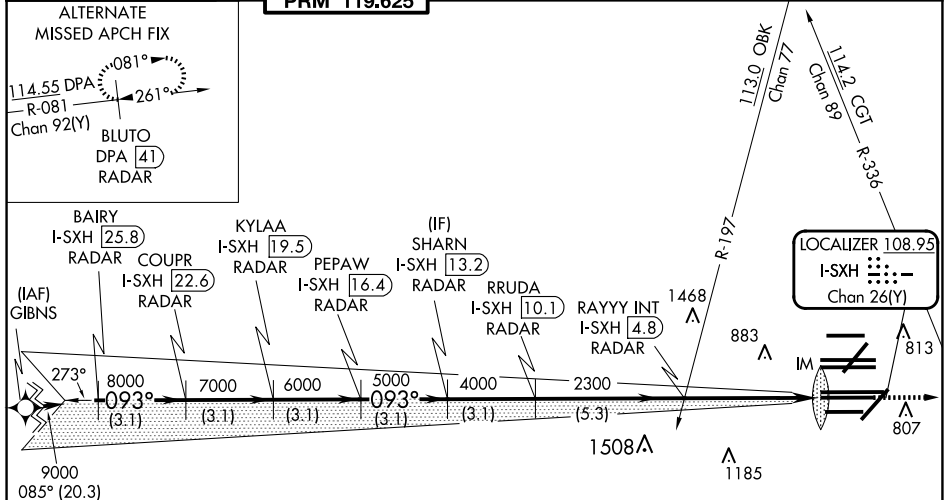
D-ATIS 135.4 282.225	CHICAGO APP CON 119.0 292.125	O'HARE TOWER 120.75 348.0 RPM 110.625	GND CON 124.125 (TWR NORTH) 118.05 (TWR SOUTH) 226.675 (ALL TWRS)	TWR CENTER 121.75 (OBND) 121.9 (IBND)	CLNC DEL 121.6	CPDLC
----------------------------	-------------------------------------	---	--	---	-------------------	-------


ALTERNATE
MISSED APCH FIX


114.55 DPA
R-081
Chan 92(Y)

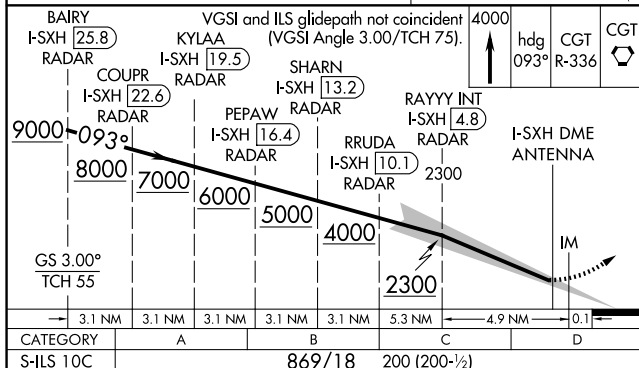
081°
261°

BLUTO
DPA 41
RADAR

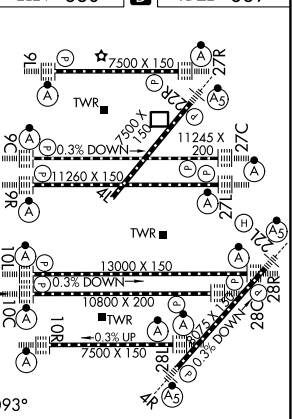


MISSED APCH FIX
CHICAGO HEIGHTS
CGT 
114.2
Chan 89

 156°
336° R-156°



ELEV 680	D	TDZE 669
----------	----------	----------



HIRL all Rwys
TDZ/CL all Rwys except 4L