

LOC/DME I-JAV  
**110.5**  
Chan **42**

APP CRS  
**093°**

Rwy Ldg **11260**  
TDZE **668**  
Apt Elev **680**

ILS or LOC RWY 9R  
CHICAGO O'HARE INTL (ORD)

RNP APCH-GPS from GIBNS.

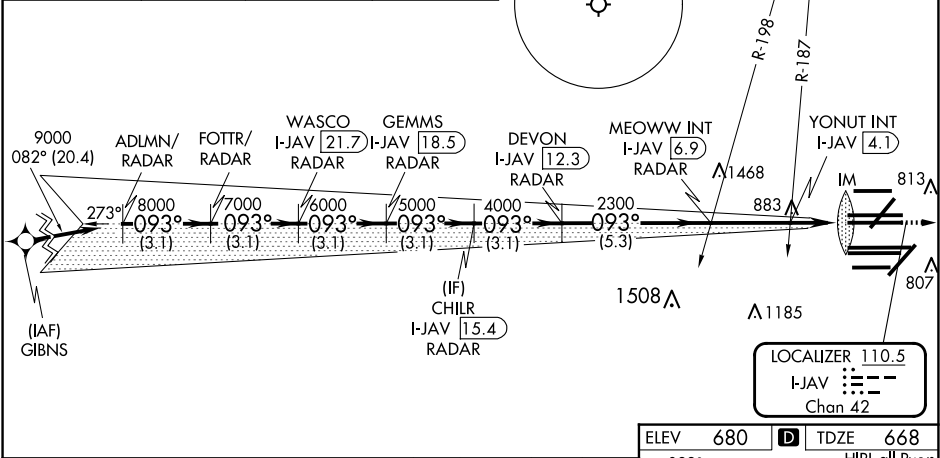
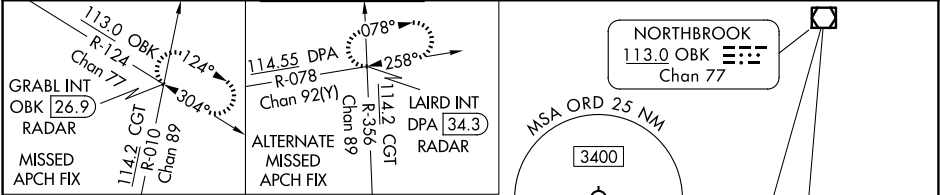
Aircraft not GPS equipped - RADAR required for procedure entry. RADAR or DME required.

Simultaneous approach authorized. For inop ALS, increase S-LOC 9R Cat C/D visibility to 2 SM.

ALSf-2

MISSED APPROACH: Climb to 1200 then climb to 4000 on heading 085° and OBK VOR/DME R-124 to GRABL INT/OKB 26.9 DME/RADAR and hold.

D-ATIS <b>135.4</b> <b>282.225</b>	CHICAGO APP CON <b>119.0 292.125</b>	O'HARE TOWER <b>126.9 348.0</b>	GND CON <b>124.125</b> (TWR NORTH) <b>118.05</b> (TWR SOUTH) <b>226.675</b> (ALL TWRs)	(TWR CENTER) <b>121.75</b> (OBND) <b>121.9</b> (IBND)	CLNC DEL <b>121.6</b>	CPDLC
--	---	------------------------------------	---	---	--------------------------	-------



VGSI and ILS glidepath not coincident (VGSI Angle 3.00/TCH 76).						1200	4000	OBK R-124	GRABL INT
ADLMN/ RADAR	FOTTR/ RADAR	WASCO I-JAV [21.7] RADAR	CHILR I-JAV [15.4] RADAR	MEOWW INT I-JAV [6.9] RADAR	YONUT INT I-JAV [4.1] RADAR	IM	I-JAV [2]		
9000	8000	7000	6000	5000	4000	2300	1380		
GS 3.00° TCH 58	3.1 NM	3.1 NM	3.1 NM	3.1 NM	3.1 NM	5.3 NM	2.8 NM	0.9 NM	
CATEGORY	A		B		C		D		
S-ILS 9R	868/18				200 (200-½)				
S-LOC 9R	1380/24		712 (700-½)		1380-1½		712 (700-1%)		
YONUT FIX MINIMUMS (DUAL VOR RECEIVERS OR DME REQUIRED)									
S-LOC 9R	1120/24		452 (500-½)		1120/45		452 (500-¾)		

ELEV 680 TDZE 668

HIRL all Rwy's

TDZ/CL all Rwy's except 4L

FAF to MAP 4.9 NM

Knots	60	90	120	150	180
Min:Sec	4:54	3:16	2:27	1:58	1:38

EC-3, 07 AUG 2025 to 04 SEP 2025

EC-3, 07 AUG 2025 to 04 SEP 2025