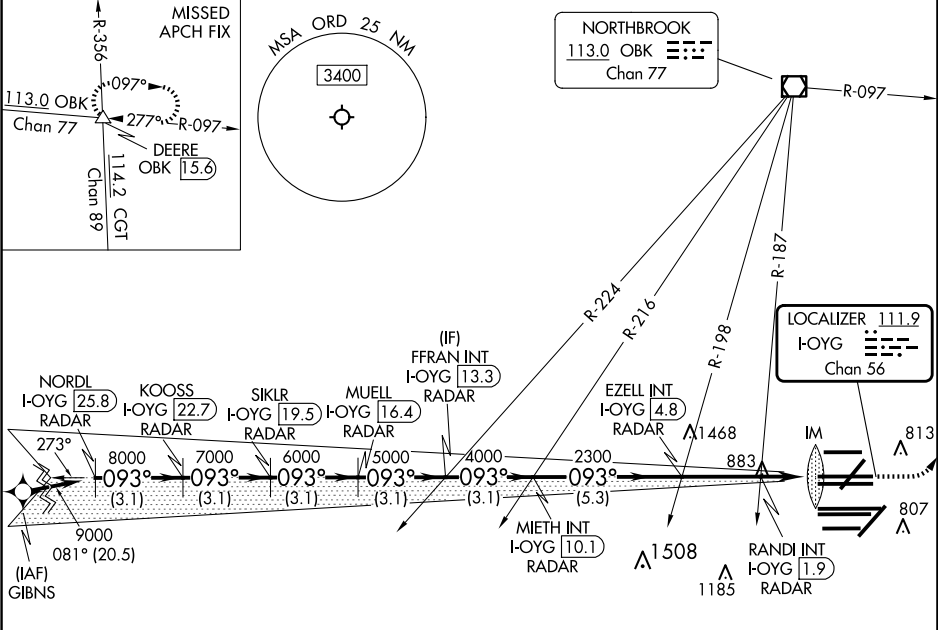


LOC/DME I-OYG	APP CRS	Rwy Ldg
<b>111.9</b>	<b>093°</b>	<b>11245</b>
Chan 56		TDZE <b>673</b>
		Apt Elev <b>680</b>

ILS or LOC RWY 9C

CHICAGO O'HARE INTL (ORD)

DME or RADAR required. From GIBNS: RNAV 1-GPS required. Aircraft not GPS equipped - RADAR required for procedure entry.			ALSIF-2	MISSED APPROACH: Climb to 1200 then climbing left turn to 4000 on heading 037° and OBK VOR/DME R-097 to DEERE INT/ OBK 15.6 DME and hold.	
Simultaneous approach authorized. For inop ALS, increase S-LOC 09C Cat C/D visibility to 1½ SM.					
D-ATIS	CHICAGO APP CON	O'HARE TOWER	GND CON (TWR CENTER)	CLNC DEL	CPDLC
<b>135.4</b>					
<b>282.225</b>	<b>119.0 292.125</b>	<b>121.15 348.0</b>	<b>124.125</b> (TWR NORTH) <b>118.05</b> (TWR SOUTH) <b>226.675</b> (ALL TWRs)	<b>121.75</b> (OBND) <b>121.9</b> (IBND)	<b>121.6</b>



NORDL I-OYG 25.8 RADAR	KOOSS I-OYG 22.7 RADAR	SIKLR I-OYG 19.5 RADAR	MUELL I-OYG 16.4 RADAR	FFRAN INT I-OYG 13.3 RADAR	EZELL INT I-OYG 4.8 RADAR	MIETH INT I-OYG 10.1 RADAR	RANDI INT I-OYG 1.9 RADAR	DEERE INT
9000	8000	7000	6000	5000	4000	2300	1400	1200
3.1 NM	3.1 NM	3.1 NM	3.1 NM	3.1 NM	5.3 NM	2.8 NM	0.7 NM	1.1 NM
CATEGORY A B C D								
S-ILS 9C 873/18 200 (200-½)								
S-LOC 9C 1140/24 467 (500-½) 1140/50 467 (500-1)								

