

LOC/DME I-VZE	APP CRS	Rwy Ldg	10800
108.95	273°	TDZE	651
Chan 26 (Y)		Apt Elev	680

ILS or LOC RWY 28C

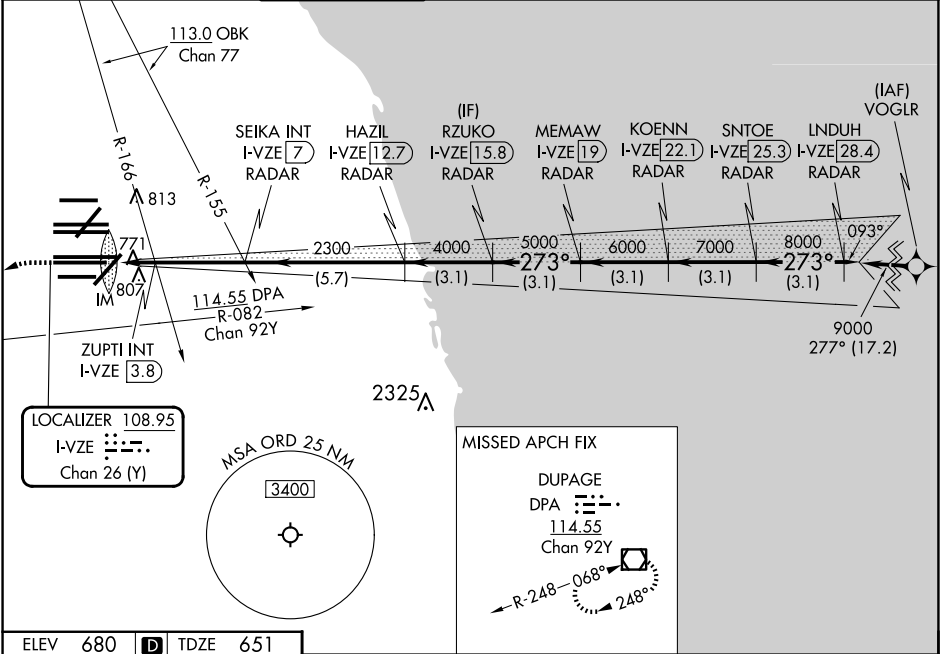
CHICAGO O'HARE INTL (ORD)

From VOGLR: RNAV 1-GPS required.
Aircraft not GPS equipped - RADAR required for procedure entry.
DME or RADAR required.

ALSf-2

MISSED APPROACH: Climb to 1100 then climbing left turn to 4000 on heading 215° and DPA VOR/DME R-082 to DPA VOR/DME and hold.

D-ATIS	CHICAGO APP CON	O'HARE TOWER	GND CON (TWR NORTH)	(TWR CENTER)	CLNC DEL	CPDLC
135.4	119.0 292.125	120.75 348.0	124.125 (TWR SOUTH)	121.75 (OBND)	121.6	
282.225			226.675 (ALL TWRs)	121.9 (BND)		



HIRL chart for runway 28C. The chart displays the runway layout with various lighting and altitude information. Key features include:

- Runway 28C: 11260 X 150, 11245 X 200, 10800 X 200, 13000 X 150, 7500 X 150, 10800 X 200, 7500 X 150.
- Runway 27C: 11260 X 150, 11245 X 200, 10800 X 200, 13000 X 150, 7500 X 150, 10800 X 200, 7500 X 150.
- Runway 27B: 11260 X 150, 11245 X 200, 10800 X 200, 13000 X 150, 7500 X 150, 10800 X 200, 7500 X 150.
- Runway 27A: 11260 X 150, 11245 X 200, 10800 X 200, 13000 X 150, 7500 X 150, 10800 X 200, 7500 X 150.
- Runway 27: 11260 X 150, 11245 X 200, 10800 X 200, 13000 X 150, 7500 X 150, 10800 X 200, 7500 X 150.
- Runway 26: 11260 X 150, 11245 X 200, 10800 X 200, 13000 X 150, 7500 X 150, 10800 X 200, 7500 X 150.
- Runway 25: 11260 X 150, 11245 X 200, 10800 X 200, 13000 X 150, 7500 X 150, 10800 X 200, 7500 X 150.
- Runway 24: 11260 X 150, 11245 X 200, 10800 X 200, 13000 X 150, 7500 X 150, 10800 X 200, 7500 X 150.
- Runway 23: 11260 X 150, 11245 X 200, 10800 X 200, 13000 X 150, 7500 X 150, 10800 X 200, 7500 X 150.
- Runway 22: 11260 X 150, 11245 X 200, 10800 X 200, 13000 X 150, 7500 X 150, 10800 X 200, 7500 X 150.
- Runway 21: 11260 X 150, 11245 X 200, 10800 X 200, 13000 X 150, 7500 X 150, 10800 X 200, 7500 X 150.
- Runway 20: 11260 X 150, 11245 X 200, 10800 X 200, 13000 X 150, 7500 X 150, 10800 X 200, 7500 X 150.
- Runway 19: 11260 X 150, 11245 X 200, 10800 X 200, 13000 X 150, 7500 X 150, 10800 X 200, 7500 X 150.
- Runway 18: 11260 X 150, 11245 X 200, 10800 X 200, 13000 X 150, 7500 X 150, 10800 X 200, 7500 X 150.
- Runway 17: 11260 X 150, 11245 X 200, 10800 X 200, 13000 X 150, 7500 X 150, 10800 X 200, 7500 X 150.
- Runway 16: 11260 X 150, 11245 X 200, 10800 X 200, 13000 X 150, 7500 X 150, 10800 X 200, 7500 X 150.
- Runway 15: 11260 X 150, 11245 X 200, 10800 X 200, 13000 X 150, 7500 X 150, 10800 X 200, 7500 X 150.
- Runway 14: 11260 X 150, 11245 X 200, 10800 X 200, 13000 X 150, 7500 X 150, 10800 X 200, 7500 X 150.
- Runway 13: 11260 X 150, 11245 X 200, 10800 X 200, 13000 X 150, 7500 X 150, 10800 X 200, 7500 X 150.
- Runway 12: 11260 X 150, 11245 X 200, 10800 X 200, 13000 X 150, 7500 X 150, 10800 X 200, 7500 X 150.
- Runway 11: 11260 X 150, 11245 X 200, 10800 X 200, 13000 X 150, 7500 X 150, 10800 X 200, 7500 X 150.
- Runway 10: 11260 X 150, 11245 X 200, 10800 X 200, 13000 X 150, 7500 X 150, 10800 X 200, 7500 X 150.
- Runway 9: 11260 X 150, 11245 X 200, 10800 X 200, 13000 X 150, 7500 X 150, 10800 X 200, 7500 X 150.
- Runway 8: 11260 X 150, 11245 X 200, 10800 X 200, 13000 X 150, 7500 X 150, 10800 X 200, 7500 X 150.
- Runway 7: 11260 X 150, 11245 X 200, 10800 X 200, 13000 X 150, 7500 X 150, 10800 X 200, 7500 X 150.
- Runway 6: 11260 X 150, 11245 X 200, 10800 X 200, 13000 X 150, 7500 X 150, 10800 X 200, 7500 X 150.
- Runway 5: 11260 X 150, 11245 X 200, 10800 X 200, 13000 X 150, 7500 X 150, 10800 X 200, 7500 X 150.
- Runway 4: 11260 X 150, 11245 X 200, 10800 X 200, 13000 X 150, 7500 X 150, 10800 X 200, 7500 X 150.
- Runway 3: 11260 X 150, 11245 X 200, 10800 X 200, 13000 X 150, 7500 X 150, 10800 X 200, 7500 X 150.
- Runway 2: 11260 X 150, 11245 X 200, 10800 X 200, 13000 X 150, 7500 X 150, 10800 X 200, 7500 X 150.
- Runway 1: 11260 X 150, 11245 X 200, 10800 X 200, 13000 X 150, 7500 X 150, 10800 X 200, 7500 X 150.

HIRL all Rwy's
TDZ/CL all Rwy's except 4L

FAF to MAP 5 NM					
Knots	60	90	120	150	180
Min:Sec	5:00	3:20	2:30	2:00	1:40

S-LOC chart for runway 28C. The chart displays the runway layout with various lighting and altitude information. Key features include:

- Runway 28C: 11260 X 150, 11245 X 200, 10800 X 200, 13000 X 150, 7500 X 150, 10800 X 200, 7500 X 150.
- Runway 27C: 11260 X 150, 11245 X 200, 10800 X 200, 13000 X 150, 7500 X 150, 10800 X 200, 7500 X 150.
- Runway 27B: 11260 X 150, 11245 X 200, 10800 X 200, 13000 X 150, 7500 X 150, 10800 X 200, 7500 X 150.
- Runway 27A: 11260 X 150, 11245 X 200, 10800 X 200, 13000 X 150, 7500 X 150, 10800 X 200, 7500 X 150.
- Runway 27: 11260 X 150, 11245 X 200, 10800 X 200, 13000 X 150, 7500 X 150, 10800 X 200, 7500 X 150.
- Runway 26: 11260 X 150, 11245 X 200, 10800 X 200, 13000 X 150, 7500 X 150, 10800 X 200, 7500 X 150.
- Runway 25: 11260 X 150, 11245 X 200, 10800 X 200, 13000 X 150, 7500 X 150, 10800 X 200, 7500 X 150.
- Runway 24: 11260 X 150, 11245 X 200, 10800 X 200, 13000 X 150, 7500 X 150, 10800 X 200, 7500 X 150.
- Runway 23: 11260 X 150, 11245 X 200, 10800 X 200, 13000 X 150, 7500 X 150, 10800 X 200, 7500 X 150.
- Runway 22: 11260 X 150, 11245 X 200, 10800 X 200, 13000 X 150, 7500 X 150, 10800 X 200, 7500 X 150.
- Runway 21: 11260 X 150, 11245 X 200, 10800 X 200, 13000 X 150, 7500 X 150, 10800 X 200, 7500 X 150.
- Runway 20: 11260 X 150, 11245 X 200, 10800 X 200, 13000 X 150, 7500 X 150, 10800 X 200, 7500 X 150.
- Runway 19: 11260 X 150, 11245 X 200, 10800 X 200, 13000 X 150, 7500 X 150, 10800 X 200, 7500 X 150.
- Runway 18: 11260 X 150, 11245 X 200, 10800 X 200, 13000 X 150, 7500 X 150, 10800 X 200, 7500 X 150.
- Runway 17: 11260 X 150, 11245 X 200, 10800 X 200, 13000 X 150, 7500 X 150, 10800 X 200, 7500 X 150.
- Runway 16: 11260 X 150, 11245 X 200, 10800 X 200, 13000 X 150, 7500 X 150, 10800 X 200, 7500 X 150.
- Runway 15: 11260 X 150, 11245 X 200, 10800 X 200, 13000 X 150, 7500 X 150, 10800 X 200, 7500 X 150.
- Runway 14: 11260 X 150, 11245 X 200, 10800 X 200, 13000 X 150, 7500 X 150, 10800 X 200, 7500 X 150.
- Runway 13: 11260 X 150, 11245 X 200, 10800 X 200, 13000 X 150, 7500 X 150, 10800 X 200, 7500 X 150.
- Runway 12: 11260 X 150, 11245 X 200, 10800 X 200, 13000 X 150, 7500 X 150, 10800 X 200, 7500 X 150.
- Runway 11: 11260 X 150, 11245 X 200, 10800 X 200, 13000 X 150, 7500 X 150, 10800 X 200, 7500 X 150.
- Runway 10: 11260 X 150, 11245 X 200, 10800 X 200, 13000 X 150, 7500 X 150, 10800 X 200, 7500 X 150.
- Runway 9: 11260 X 150, 11245 X 200, 10800 X 200, 13000 X 150, 7500 X 150, 10800 X 200, 7500 X 150.
- Runway 8: 11260 X 150, 11245 X 200, 10800 X 200, 13000 X 150, 7500 X 150, 10800 X 200, 7500 X 150.
- Runway 7: 11260 X 150, 11245 X 200, 10800 X 200, 13000 X 150, 7500 X 150, 10800 X 200, 7500 X 150.
- Runway 6: 11260 X 150, 11245 X 200, 10800 X 200, 13000 X 150, 7500 X 150, 10800 X 200, 7500 X 150.
- Runway 5: 11260 X 150, 11245 X 200, 10800 X 200, 13000 X 150, 7500 X 150, 10800 X 200, 7500 X 150.
- Runway 4: 11260 X 150, 11245 X 200, 10800 X 200, 13000 X 150, 7500 X 150, 10800 X 200, 7500 X 150.
- Runway 3: 11260 X 150, 11245 X 200, 10800 X 200, 13000 X 150, 7500 X 150, 10800 X 200, 7500 X 150.
- Runway 2: 11260 X 150, 11245 X 200, 10800 X 200, 13000 X 150, 7500 X 150, 10800 X 200, 7500 X 150.
- Runway 1: 11260 X 150, 11245 X 200, 10800 X 200, 13000 X 150, 7500 X 150, 10800 X 200, 7500 X 150.

CATEGORY	A		B		C		D	
S-ILS 28C	851/18 200 (200-½)							
S-LOC 28C	1200/24		549 (600-½)		1200/60		549 (600-1¼)	
ZUPTI FIX MINIMUMS (DUAL VOR RECEIVERS OR DME REQUIRED)								
S-LOC 28C	1040/24		389 (400-½)		1040/35		389 (400-¾)	

EC-3, 07 AUG 2025 to 04 SEP 2025

EC-3, 07 AUG 2025 to 04 SEP 2025