

ILS or LOC RWY 27C  
CHICAGO O'HARE INTL (ORD)

**MISSED APPROACH:** Climb to 1100 then climbing right turn to 4000 on heading 290° and CGT R-322 to UKUNE INT/CGT 48 DME and hold.

NORTHBROOK  
113.0 OBK  
Chan 77

DRISCL INT  
I-UYJ 6.7  
RADAR

(IF)  
MRRFF  
I-UYJ 15.8  
RADAR

CERMI  
I-UYJ 22.1  
RADAR

NCHLS  
I-UYJ 28.4  
RADAR

273°

2200

4000 5000 6000 7000 8000

(3.1) (3.1) (3.1) (3.1) (3.1)

093°

9000 281° (17.3)

(IAF) VOGLR

IM 813 823 807

YVONE INT  
I-UYJ 3.4  
RADAR

JMBBO  
I-UYJ 12.7  
RADAR

BOOWW  
I-UYJ 18.9  
RADAR

CRICO  
I-UYJ 25.2  
RADAR

2325

LOCALIZER 111.9  
I-UYJ  
Chan 56

114.2 CGT  
Chan 89

114.55 DPA  
R-021  
Chan 92(1)

114.2 CGT  
Chan 89

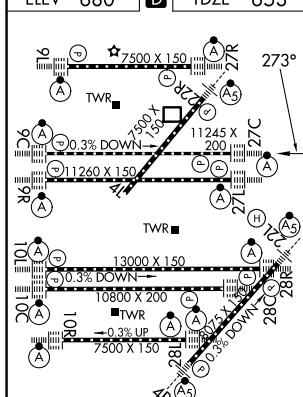
UKUNE INT  
CGT 48

MISSED APCH FIX

MSA ORD 25 NM  
3400

ELEV 680 TDZE 653

ELEV 680	<b>D</b>	TDZE 653
----------	----------	----------

[illegible]

CATEGORY	A	B	C	D
S-ILS 27C	853/18 200 (200-½)			
S-LOC 27C	1160/24 507 (500-½)	1160/55 507 (500-1)		
YVONE FIX MINIMUMS (DUAL VOR RECEIVERS or DME REQUIRED)				
S-LOC 27C	1080/24 427 (400-½)	1080/40 427 (400-¾)		