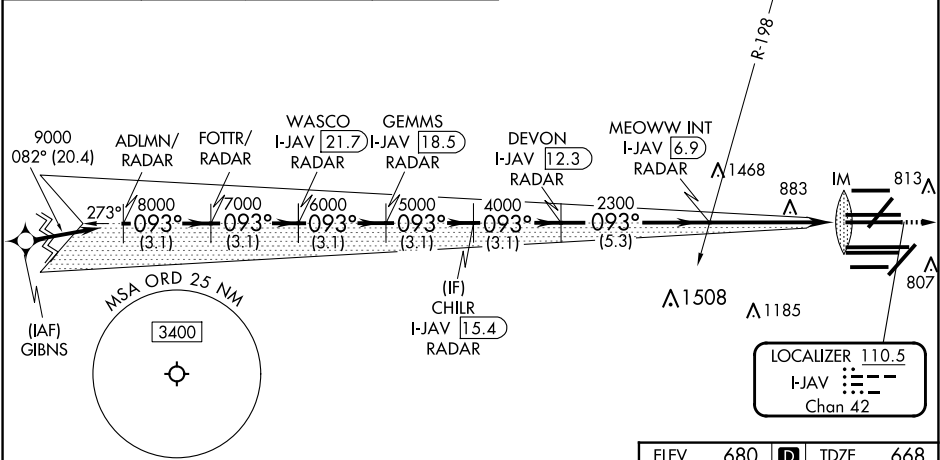
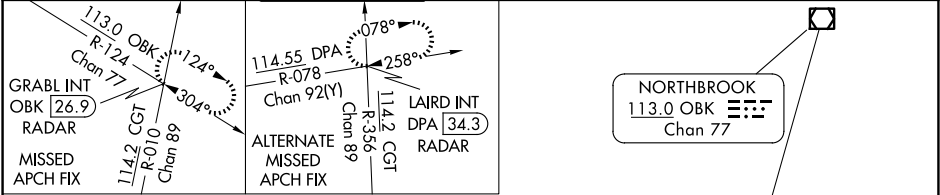


LOC/DME I-JAV 110.5 Chan 42	APP CRS 093°	Rwy Ldg 11260 TDZE 668 Apt Elev 680
---	------------------------	--

ILS RWY 9R (CAT II & III)
CHICAGO O'HARE INTL (ORD)

RNP APCH-GPS from GIBNS Aircraft not GPS equipped - RADAR required for procedure entry. RADAR or DME required.	ALSIF-2 	MISSED APPROACH: Climb to 1200 then climb to 4000 on heading 085° and OBK VOR/DME R-124 to GRABL INT/OBK 26.9 DME/RADAR and hold.
---	-------------	---

D-ATIS 135.4 282.225	CHICAGO APP CON 119.0 292.125	O'HARE TOWER 126.9 348.0	124.125 GND CON 118.05 (TWR NORTH) 226.675 (TWR SOUTH) (ALL TWRs)	(TWR CENTER) 121.75 (OBND) 121.9 (IBND)	CLNC DEL 121.6	CPDLC
--	---	------------------------------------	---	---	--------------------------	-------



VGSI and ILS glidepath not coincident (VGSI Angle 3.00/TCH 76).		1200	4000	OBK R-124	GRABL INT					
ADLMN/ RADAR	FOTTR/ RADAR	WASCO I-JAV [21.7] RADAR	CHILR I-JAV [15.4] RADAR	MEOWW INT I-JAV [6.9] RADAR						
9000	8000	7000	6000	5000	4000	2300	IM			
GS 3.00° TCH 58		3.1 NM		3.1 NM	3.1 NM	3.1 NM	3.1 NM	5.3 NM	4.8 NM	0.1 NM
CATEGORY	A	B		C		D				
S-ILS 9R	CAT II		RA 99/12		100 DA 768					
S-ILS 9R	CAT III		RVR 06							
CATEGORY II & III ILS - SPECIAL AIRCREW & AIRCRAFT CERTIFICATION REQUIRED										

ELEV 680 TDZE 668

HIRL all Rwy's
TDZ/CL all Rwy's except 4L

EC-3, 07 AUG 2025 to 04 SEP 2025

EC-3, 07 AUG 2025 to 04 SEP 2025