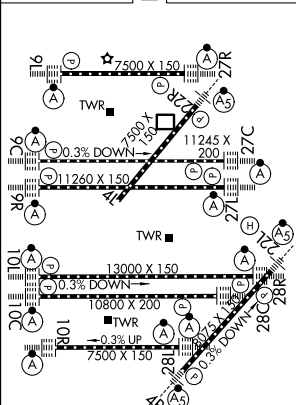
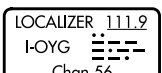
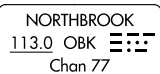


ILS RWY 9C (CAT II & III)
CHICAGO O'HARE INTL (ORD)

ALSF-2

MISSED APPROACH: Climb to 1200 then climbing left turn to 4000 on heading 037° and OBK VOR/DME R-097 to DEERE INT/OBK 15.6 DME and hold.

A

(TWR C
101.7

HIRL all Rwys
TDZ/CL all Rwys except 4L

CATEGORY II & III ILS - SPECIAL AIRCREW
& AIRCRAFT CERTIFICATION REQUIRED