

LOC/DME I-ABU  
**111.75**  
Chan 54 (Y)

APP CRS  
**273°**

Rwy Ldg  
TDZE **664**  
Apt Elev **680**

**ILS RWY 27R (CAT II & III)**  
CHICAGO O'HARE INTL (ORD)

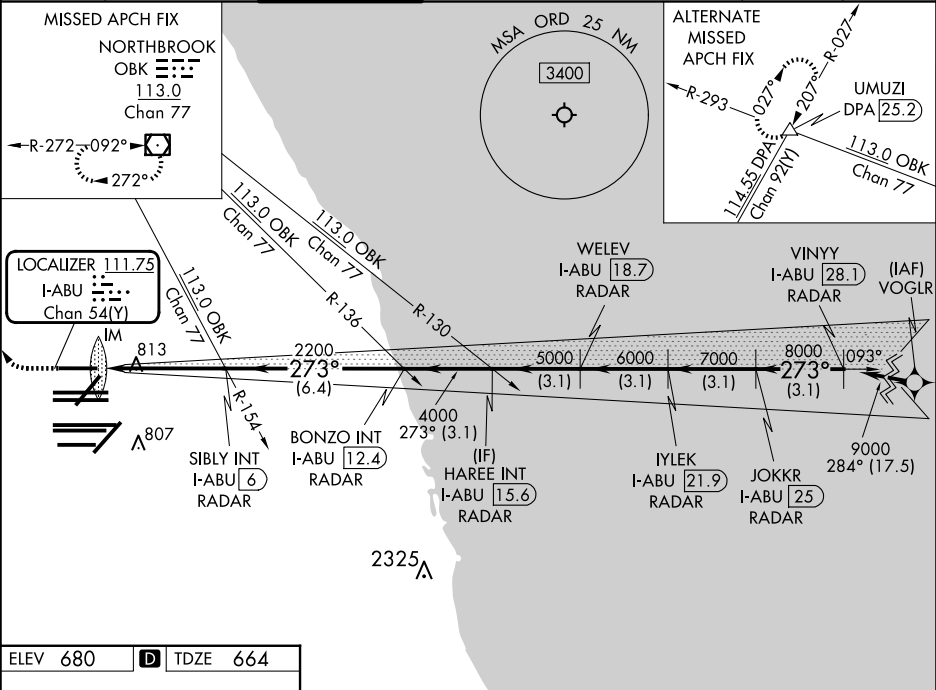
RNAV-1 GPS or RADAR required for procedure entry. RADAR or DME required.

Simultaneous approach authorized.

ALSF-2

MISSED APPROACH: Climb to 1100 then climbing right turn to 4000 direct OBK VOR/DME and hold, continue climb-in-hold to 4000.

D-ATIS <b>135.4</b> <b>282.225</b>	CHICAGO APP CON <b>119.0 292.125</b>	O'HARE TOWER <b>128.15 348.0</b>	<b>124.125</b> (TWR NORTH) <b>118.05</b> (TWR SOUTH) <b>226.675</b> (ALL TWRs)	GND CON (TWR CENTER) <b>121.75</b> (OBND) <b>121.9</b> (IBND)	CLNC DEL <b>121.6</b>	CPDLC
--	--	-------------------------------------	--	--	--------------------------	-------



ELEV 680 TDZE 664

HIRL all Rwys  
TDZ/CL all Rwys except 4L

1100 4000 OBK

Obstacle chart details: 1100, 4000, 5000, 6000, 7000, 8000, 9000. Distances: 4.7 NM, 6.4 NM, 3.1 NM, 3.1 NM, 3.1 NM, 3.1 NM, 3.1 NM.

CATEGORY	A	B	C	D
S-ILS-27R	CAT II RA 101/12 100 DA 764			
S-ILS-27R	CAT III RVR 06			

**CATEGORY II & III ILS - SPECIAL AIRCREW & AIRCRAFT CERTIFICATION REQUIRED**