

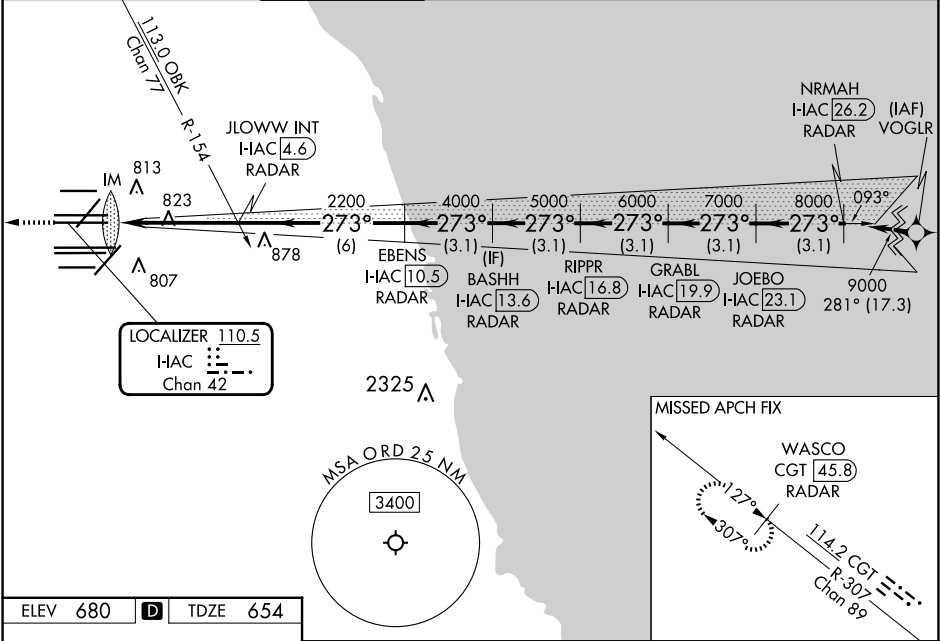
LOC/DME I-IAC	APP CRS	Rwy Ldg	11260
110.5	273°	TDZE	654
Chan 42		Apt Elev	680

ILS RWY 27L (SA CAT I)

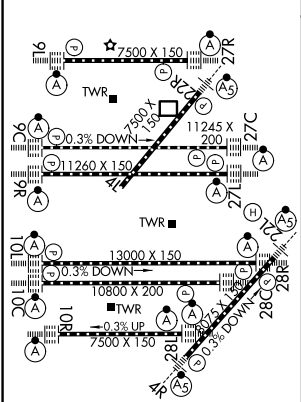
CHICAGO O'HARE INTL (ORD)

RNP APCH-GPS from VOGLR.	ALSF-2	MISSED APPROACH: Climb to 1200 then climb to 4000 on heading 265° and on CGT VORTAC R-307 to WASCO/CGT 45.8 DME/RADAR and hold.
Aircraft not GPS equipped - RADAR required for procedure entry. DME or RADAR required.		
Simultaneous approach authorized. Requires specific OPSPEC, MSPEC, or LOA approval.		

D-ATIS	CHICAGO APP CON	O'HARE TOWER	GND CON (TWR CENTER)	CLNC DEL	CPDLC
135.4			124.125 (TWR NORTH)		
282.225	119.0 292.125	126.9 348.0	118.05 (TWR SOUTH)	121.6	
			226.675 (ALL TWRs)		



ELEV 680	D	TDZE 654
----------	---	----------



1200	4000	CGT R-307	WASCO CGT 45.8 RADAR	VGSI and ILS glidepath not coincident (VGSI Angle 3.00/TCH 77).
hdg 265°				
JLOWW INT I-IAC 4.6 RADAR	EBENS I-IAC 10.5 RADAR	BASHH I-IAC 13.6 RADAR	RIPPR I-IAC 16.8 RADAR	GRABL I-IAC 19.9 RADAR
2200	4000	5000	6000	7000
IM				
1066'	4.7 NM	6 NM	3.1 NM	3.1 NM
CATEGORY A	B	C	D	
S-ILS 27L	RA 165/14	150 DA 804		

SA CATEGORY I ILS - SPECIAL AIRCREW & AIRCRAFT CERTIFICATION REQUIRED

EC-3, 07 AUG 2025 to 04 SEP 2025

EC-3, 07 AUG 2025 to 04 SEP 2025