

LOC/DME I-IAC	APP CRS	Rwy Ldg	11260
110.5	273°	TDZE	654
Chan 42		Apt Elev	680

ILS RWY 27L (CAT II & III)  
CHICAGO O'HARE INTL (ORD)

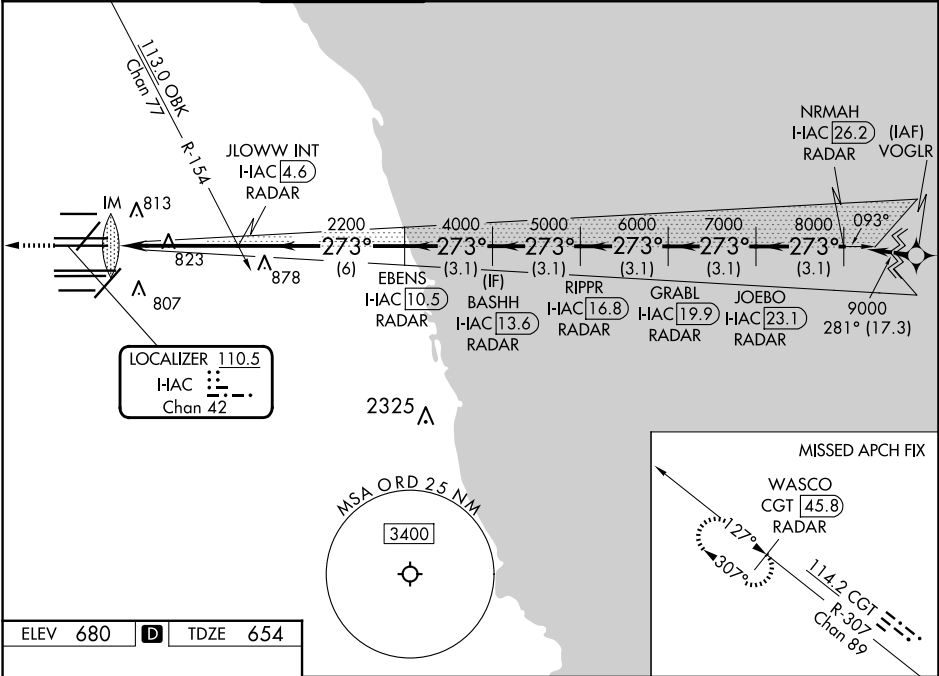
RNP APCH-GPS from VOGLR.

Aircraft not GPS equipped - RADAR required for procedure entry. DME or RADAR required.

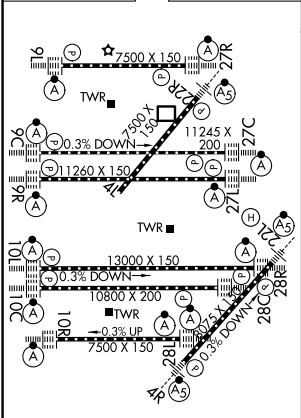
ALSIF-2  
MISSED APPROACH: Climb to 1200 then climb to 4000 on heading 265° and on CGT VORTAC R-307 to WASCO/CGT 45.8 DME/RADAR and hold.

Simultaneous approach authorized.

D-ATIS 135.4 282.225	CHICAGO APP CON 119.0 292.125	O'HARE TOWER 126.9 348.0	124.125 (TWR NORTH) 118.05 (TWR SOUTH) 226.675 (ALL TWRs)	GND CON (TWR CENTER) 121.75 (OBND) 121.9 (IBND)	CLNC DEL 121.6	CPDLC
----------------------------	-------------------------------------	-----------------------------	---	---	-------------------	-------



ELEV 680	D	TDZE 654
----------	---	----------



HIRL all Rwws  
TDZ/CL all Rwws except 4L

1200	4000	CGT R-307	WASCO CGT 45.8 RADAR	VGSI and ILS glidepath not coincident (VGSI Angle 3.00/TCH 77).	NRMAH I-IAC 26.2 RADAR
hdg 265°					
JLOWW INT I-IAC 4.6 RADAR	EBENS I-IAC 10.5 RADAR	BASHH I-IAC 13.6 RADAR	RIPPR I-IAC 16.8 RADAR	GRABL I-IAC 19.9 RADAR	JOEBO I-IAC 23.1 RADAR
IM 751	2200	4000	5000	6000	7000
2200	4000	5000	6000	7000	8000
9000					
GS 3.00°					
TCH 57					
1066' 0.1	4.7 NM	6 NM	3.1 NM	3.1 NM	3.1 NM
CATEGORY	A	B	C	D	
S-ILS 27L	CAT II RA 110/12	100 DA 754			
S-ILS 27L	CAT III	RVR 06			

CATEGORY II & III ILS - SPECIAL AIRCREW & AIRCRAFT CERTIFICATION REQUIRED