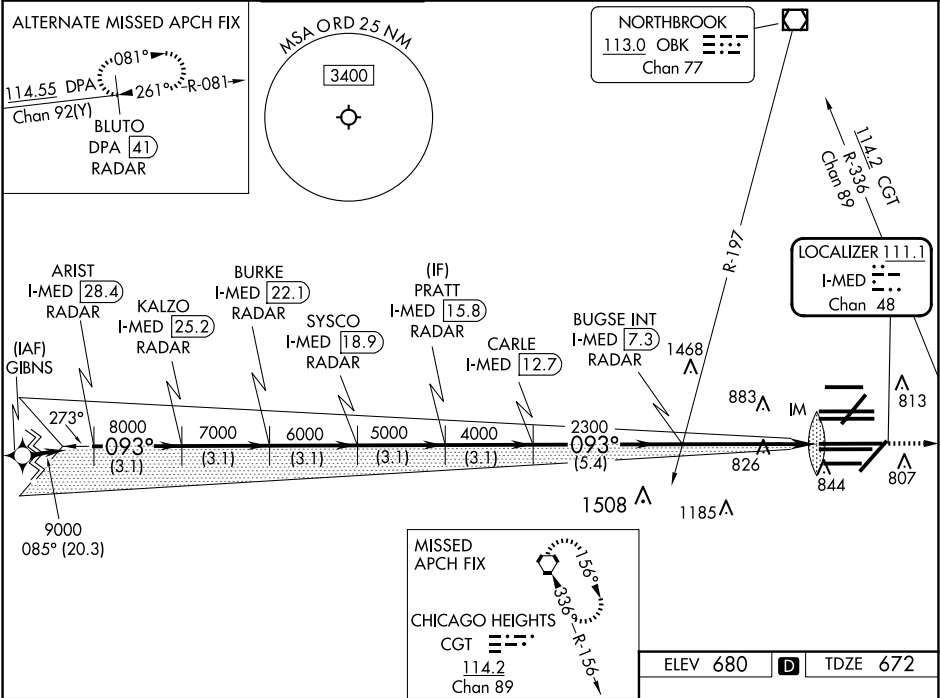


LOC/DME I-MED 111.1 Chan 48	APP CRS 093°	Rwy Ldg TDZE 672 Apt Elev 680	ILS RWY 10L (CAT II & III) CHICAGO O'HARE INTL (ORD)		
From GIBNS: RNAV-1 GPS required. RNAV 1-GPS or RADAR required for procedure entry. DME or RADAR required.			ALSF-2 	MISSED APPROACH: Climb to 4000 on heading 093° and CGT VORTAC R-336 to CGT VORTAC and hold.	
▼ Simultaneous approach authorized.					
D-ATIS 282.225	CHICAGO APP CON 119.0 292.125	O'HARE TOWER 132.7 348.0	GND CON 124.125 (TWR NORTH) 118.05 (TWR SOUTH) 226.675 (ALL TWRs)	(TWR CENTER) 121.75 (OBND) 121.9 (IBND)	CLNC DEL 121.6
			CPDLC		



ARIST I-MED 28.4 RADAR	BURKE I-MED 22.1 RADAR	PRATT I-MED 15.8 RADAR	BUGSE INT I-MED 7.3 RADAR	ELEV 680	TDZE 672
KALZO I-MED 25.2 RADAR	SYSCO I-MED 18.9 RADAR	CARLE I-MED 12.7 RADAR			
CATEGORY A				CATEGORY B	
S-ILS 10L				CAT II RA 95/12 100 DA 772	
S-ILS 10L				CAT III RVR 06	
CATEGORY II and III ILS - SPECIAL AIRCREW & AIRCRAFT CERTIFICATION REQUIRED					

HIRL all Rwys

TDZ/CL all Rwys except 4L