

ASOS  
123.95  
CLNC DEL (When twr closed)  
135.35  
GND CON  
118.625  
GALVESTON TOWER ★  
120.575 (CTAF)  
HOUSTON DEP CON  
134.45 284.0

NOTE: RADAR required.  
NOTE: DME/DME/IRU or GPS required.  
NOTE: RNAV 1.

TAKEOFF MINIMUMS  
Rwys 14, 18, 32, 36: Standard with  
minimum climb of 500' per NM to 520.

DEPARTURE ROUTE DESCRIPTION

TAKEOFF RUNWAY 14: Climb on heading 138° to 520 for RADAR vectors to WYLSN, thence. . . .

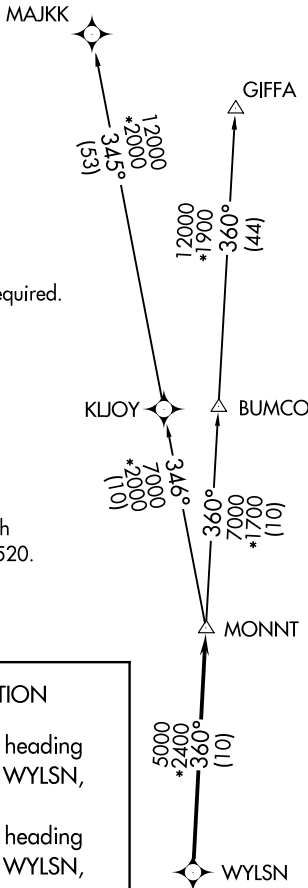
TAKEOFF RUNWAY 18: Climb on heading 179° to 520 for RADAR vectors to WYLSN, thence. . . .

TAKEOFF RUNWAY 32: Climb on heading 318° to 520 for RADAR vectors to WYLSN, thence. . . .

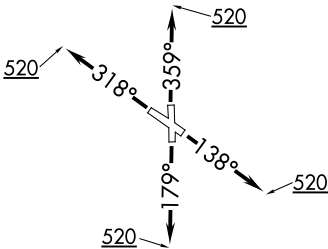
TAKEOFF RUNWAY 36: Climb on heading 359° to 520 for RADAR vectors to WYLSN, thence. . . .

. . . .on track 360° to MONNT, then on (transition). Maintain ATC assigned altitude. Expect filed altitude 10 minutes after departure.

GIFFA TRANSITION (WYLSN8.GIFFA)  
MAJKK TRANSITION (WYLSN8.MAJKK)



TOP ALTITUDE:  
ASSIGNED BY ATC



NOTE: Chart not to scale.