

VOR/DME VUH	APP CRS	Rwy Ldg	6000
113.0	143°	TDZE	5
Chan 77		Apt Elev	6

VOR RWY 14

SCHOLES INTL AT GALVESTON (GLS)

DME and RADAR required.

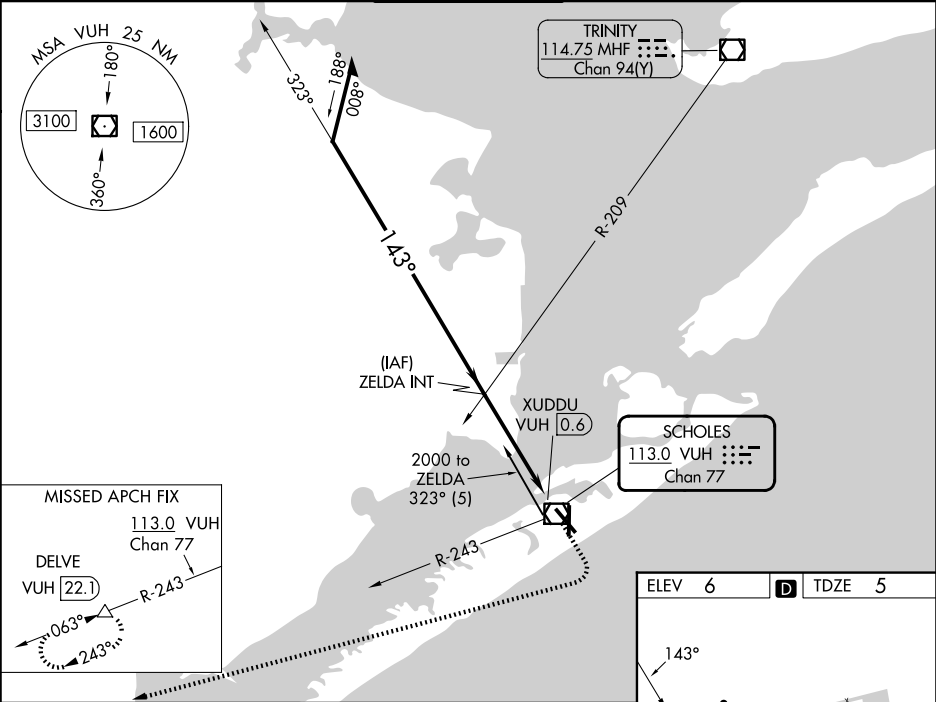
NA

Circling NA east of Rwy 18 and northeast of Rwy 32.

MALSR

MISSED APPROACH: Climb to 1200 then climbing right turn to 3000 on heading 284° and VUH VOR/DME R-243 to DELVE/22.1 DME and hold.

ASOS 123.95	HOUSTON APP CON 134.45 284.0	GALVESTON TOWER ★ 120.575 (CTAF) 0	GND CON 118.625	CLNC DEL 135.35 (When twr closed)	UNICOM 123.05
----------------	---------------------------------	---------------------------------------	--------------------	---	------------------



Remain within 15 NM

ZELDA INT

2000

323°

143°

1600

2.98°

TCH 52

3.6 NM

0.8

0.5

1200

3000

hdg 284°

VUH R-243

DELVE

VUH 1.4

XUDDU VUH 0.6

VUH VOR/DME

CATEGORY	A	B	C	D	E
S-14	460-1/2	455 (500-1/2)	460-7/8	455 (500-7/8)	
CIRCLING	500-1 494 (500-1)	520-1 514 (600-1)	620-13/4 614 (700-13/4)	620-2 614 (700-2)	620-21/4 614 (700-21/4)

ELEV 6

TDZE 5

143°

AS

8

150

600

150

36

TWR

REIL Rwys 18, 32, and 36
MIRL Rwy 18-36
HIRL Rwy 14-32

SC-5, 07 AUG 2025 to 04 SEP 2025

SC-5, 07 AUG 2025 to 04 SEP 2025