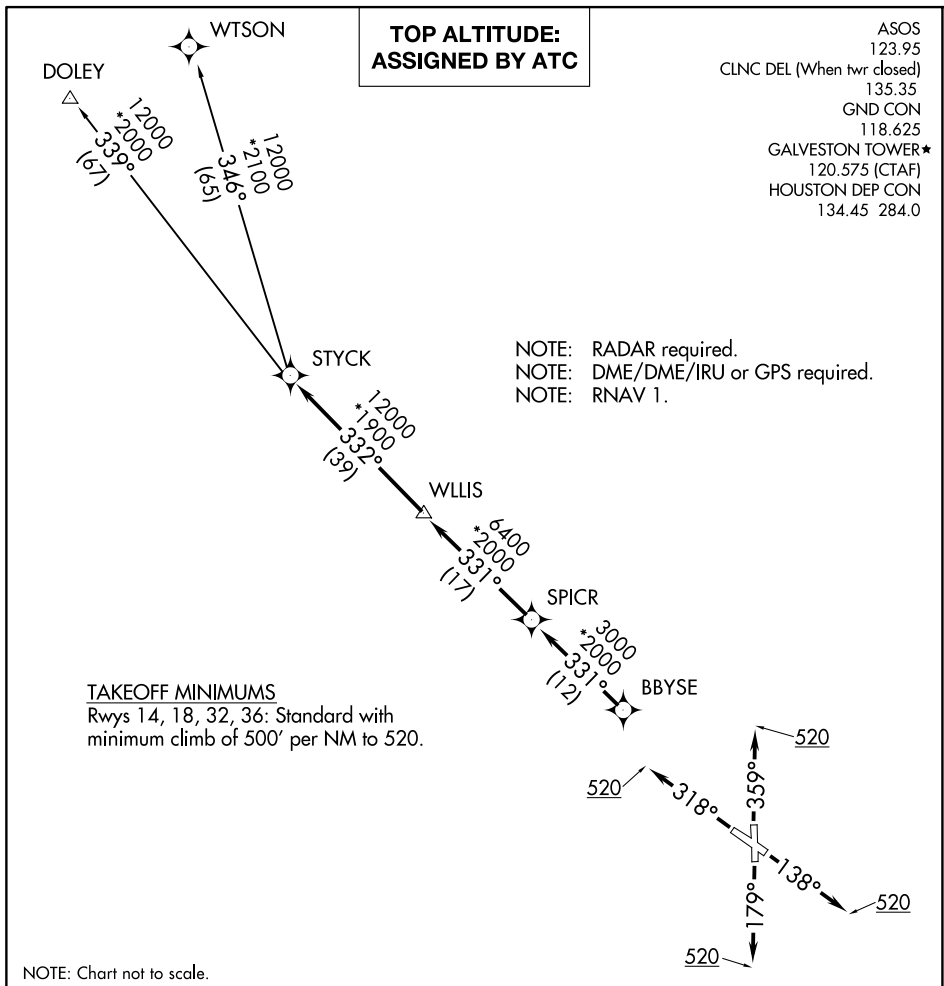


GALVESTON, TEXAS

STYCK EIGHT DEPARTURE (RNAV)



DEPARTURE ROUTE DESCRIPTION

TAKEOFF RUNWAY 36: Climb on heading 359° to 520 for RADAR vectors to BBYSE, thence. . .

...on track 331° to SPICR, then on track 331° to WLLIS, then on track 332° to STYCK, then on (transition). Maintain ATC assigned altitude. Expect filed altitude 10 minutes after departure.

DOLEY TRANSITION (STYCK8.DOLEY)

WTSON TRANSITION (STYCK8.WTSON)

STYCK EIGHT DEPARTURE (RNAV)

(STYCK8.STYCK) 07OCT21

GALVESTON, TEXAS

SCHOLLS INTL AT GALVESTON (GLS)

SC-5, 07 AUG 2025 to 04 SEP 2025