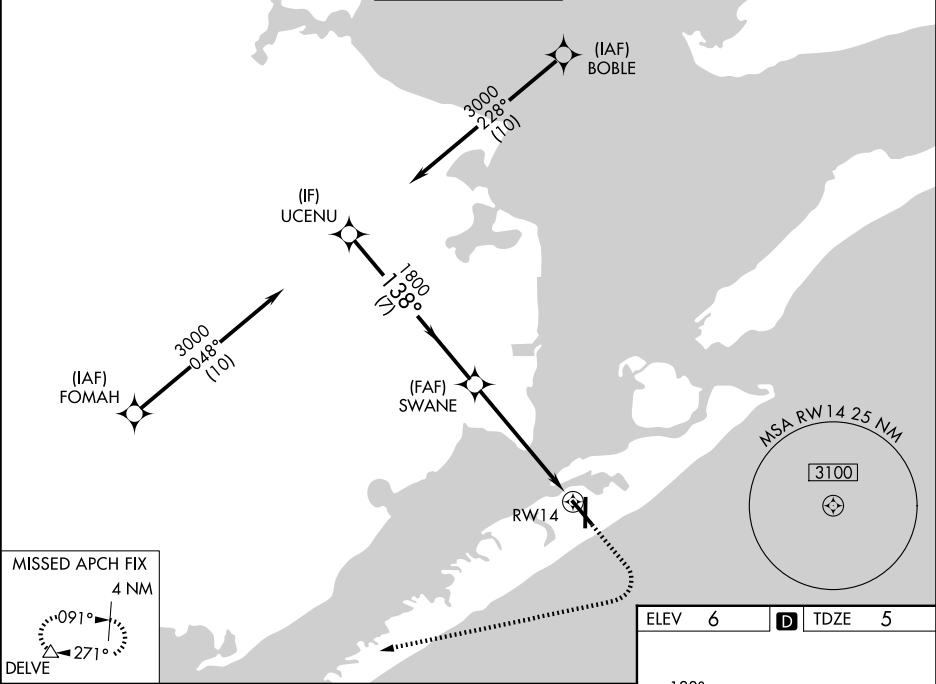


WAAS CH 65606 W14A	APP CRS 138°	Rwy Ldg 6000 TDZE 5 Apt Elev 6
----------------------------------------	------------------------	-----------------------------------------------------------

RNAV (GPS) RWY 14

SCHOLES INTL AT GALVESTON (GLS)

RNP APCH - GPS. <div><div></div><div>Circling NA east of Rwy 18 and northeast of Rwy 32. For uncompensated Baro-VNAV systems, LNAV/VNAV NA below 0°C or above 54°C.</div></div>			MALSR <div><div></div><div>A5</div></div>	MISSED APPROACH: Climb to 1200 then climbing right turn to 3000 direct DELVE and hold.	
ASOS 123.95	HOUSTON APP CON 134.45 284.0	GALVESTON TOWER ★ 120.575 (CTAF)	GND CON 118.625	CLNC DEL 135.35 (When twr closed)	UNICOM 123.05



UCENU		SWANE		1200	3000	DELVE
3000		1800				
GP 3.00°		138°		1.3 NM to RWY14		
TCH 53		1800		RWY14		
7 NM		4.2 NM		1.3 NM		
CATEGORY	A	B	C	D		
LPV DA	205-½		200 (200-½)			
LNAV/VNAV DA	342-½		337 (400-½)			
LNAV MDA	460-½	455 (500-½)	460-¾	455 (500-¾)		
CIRCLING	500-1 494 (500-1)	520-1 514 (600-1)	620-1¾ 614 (700-¾)	620-2 614 (700-2)		

