

LOC I-GLS 111.7	APP CRS 138°	Rwy Ldg TDZE Apt Elev 6000 5 6
---------------------------	------------------------	--

ILS or LOC RWY 14

SCHOLES INTL AT GALVESTON (GLS)

RADAR required for procedure entry at UCENU.

▼

▲ NA

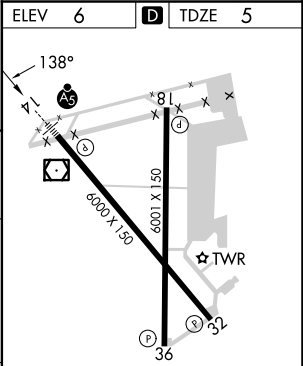
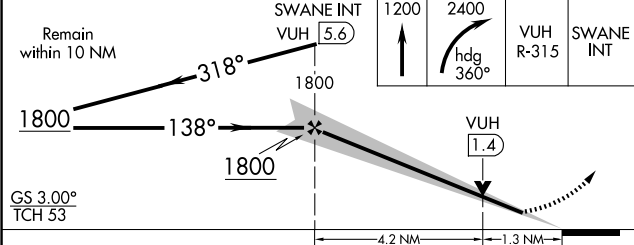
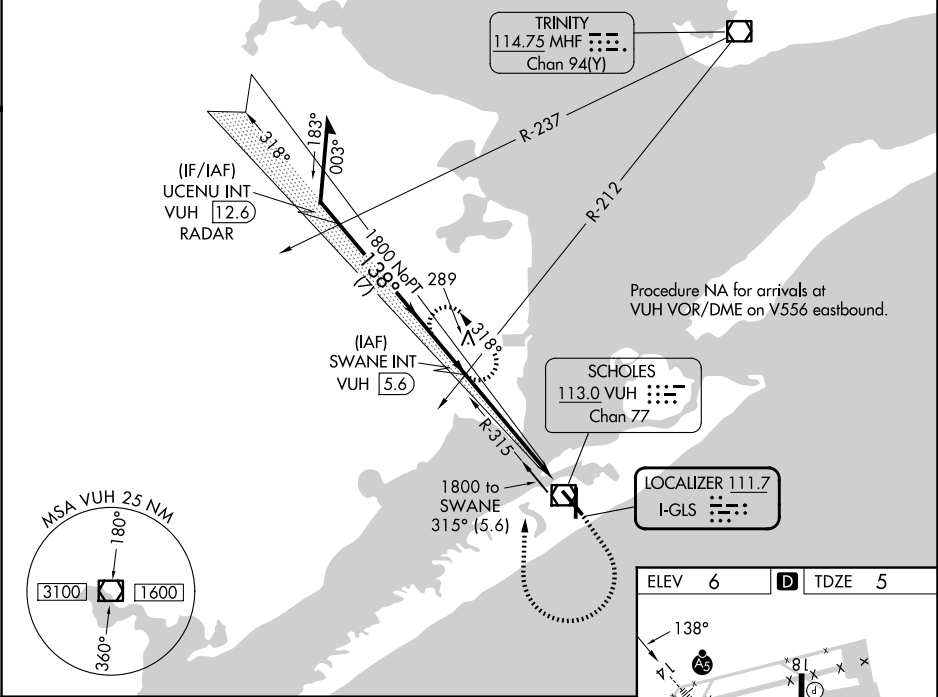
Circling NA east of Rwy 18 and northeast of Rwy 32.
For inop ALS, increase S-LOC 14 Cat A and B visibility to 1 SM. DME from VUH VOR/DME. Simultaneous reception of I-GLS and VUH DME required.

MALSR

AS

MISSED APPROACH: Climb to 1200 then climbing right turn to 2400 on heading 360° and VUH VOR/DME R-315 to SWANE INT/VUH 5.6 DME and hold, continue climb-in-hold to 2400.

ASOS 123.95	HOUSTON APP CON 134.45 284.0	GALVESTON TOWER ★ 120.575 (CTAF) 0	GND CON 118.625	CLNC DEL 135.35 (When twr closed)	UNICOM 123.05
-----------------------	--	---	---------------------------	--	-------------------------



CATEGORY	A	B	C	D
S-ILS 14	205-½ 200 (200-½)			
S-LOC 14	460-½ 455 (500-½)	460-⅞ 455 (500-⅞)		
CIRCLING	500-1 494 (500-1)	520-1 514 (600-1)	620-1¾ 614 (700-1¾)	620-2 614 (700-2)

REIL Rwys 18, 32, and 36					
MIRL Rwy 18-36					
HIRL Rwy 14-32					
FAF to MAP 5.5 NM					
Knots	60	90	120	150	180
Min:Sec	5:30	3:40	2:45	2:12	1:50