

WAAS CH 81803 W29A	APP CRS 292°	Rwy Ldg 9227 TDZE 333 Apt Elev 336
--	------------------------	---

RNAV (GPS) RWY 29R

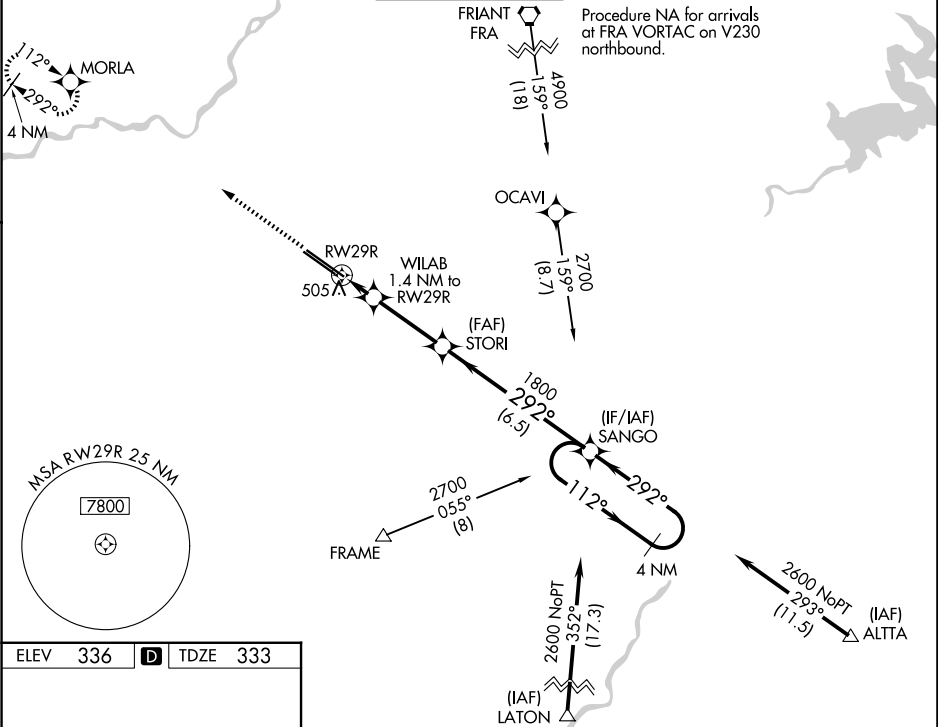
FRESNO YOSEMITE INTL (FAT)

For uncompensated Baro-VNAV systems, LNAV/VNAV NA below 0°C (32°F) or above 54°C (130°F). DME/DME RNP-0.3 NA.

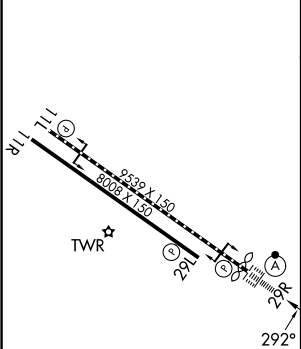
ALSF-2

MISSED APPROACH: Climb to 2000 direct MORLA and hold.

ATIS 121.35 273.6	FRESNO APP CON 119.6 351.95	FRESNO TOWER 118.2 251.1	GND CON 121.7 348.6	CLNC DEL 124.35 348.6
-----------------------------	---------------------------------------	------------------------------------	-------------------------------	---------------------------------



ELEV 336	D	TDZE 333
----------	---	----------



REIL Rwy 11L and 11R
HIRL Rwy 11L-29R
MIRL Rwy 11R-29L
TDZ/CL Rwy 29R

2000	MORLA	VGSI and RNAV glidepath not coincident (VGSI Angle 3.00/TCH 76).	4 NM	SANGO	Holding Pattern
*LNAV only					
		WILAB 1.4 NM to RWY29R	STORI 1800	292°	2600
		RWY29R	*820	1800	
		1.4 NM	3 NM	6.5 NM	
CATEGORY	A	B	C	D	
LPV DA		533/18	200 (200-½)		
LNAV/VNAV DA		689/30	356 (400-⅝)		
LNAV MDA	760/24	427 (500-½)	760/40	427 (500-¾)	
CIRCLING	820-1	484 (500-1)	920-1½ 584 (600-1½)	920-2 584 (600-2)	