

FRESNO, CALIFORNIA

HI-LOC Z RWY 11L

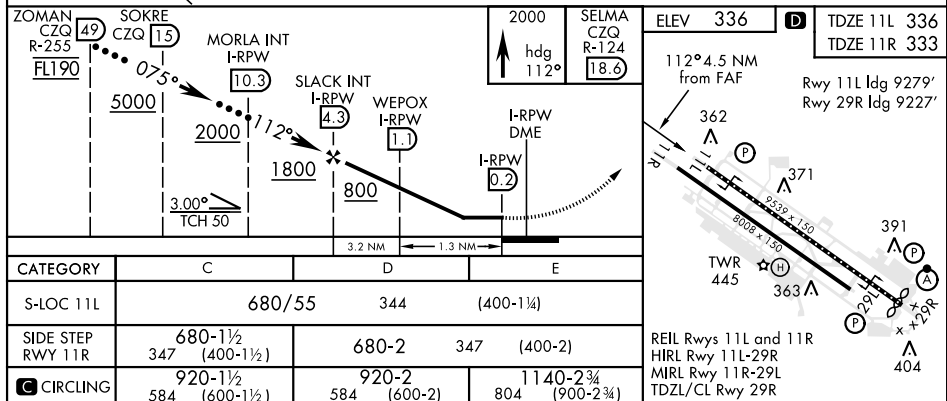
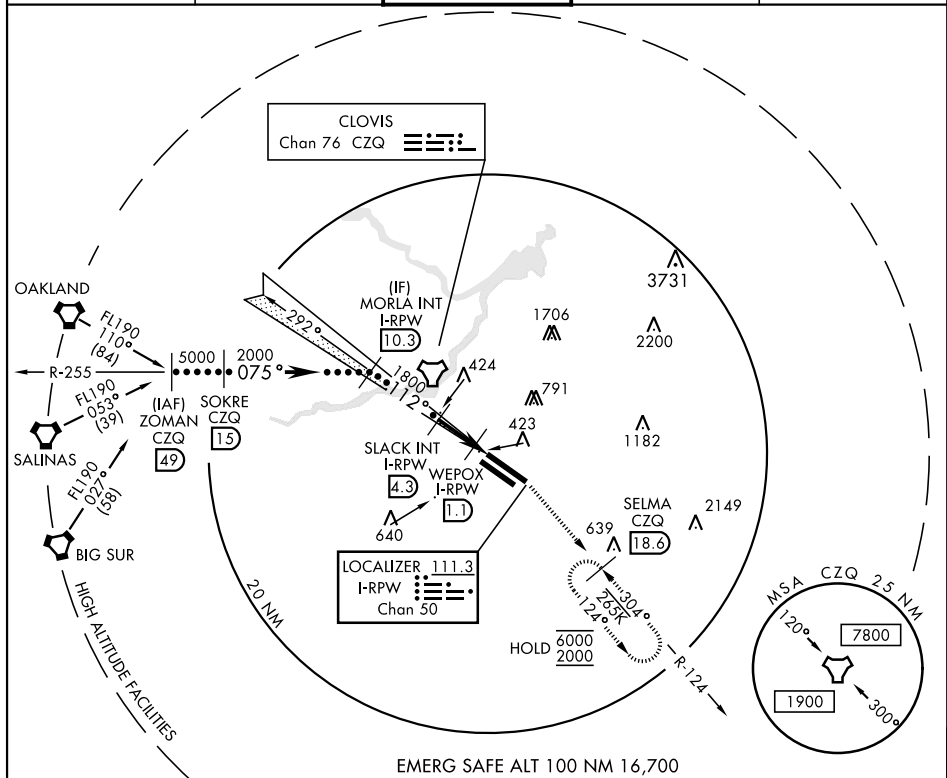
LOC/DME I-RPW	APCH CRS	Rwy Idg	11L	<b>9279</b>	11R	<b>8008</b>
<b>111.3</b>		TDZE	11L	<b>336</b>	11R	<b>333</b>
Chan <b>50</b>	<b>112°</b>	Arpt Elev		<b>336</b>		

AL-162 [USAF] FRESNO YOSEMITE INTL (KFAT)

DME required.

**MISSED APPROACH:** Climb to 2000 on heading 112° and CZQ TACAN R-124 to SELMA 18.6 DME and hold

ATIS 121.35 273.6	APP CON 119.6 351.95	TOWER 118.2 251.1	GND CON 121.7 348.6	CLNC DEL 124.35 348.6
----------------------	-------------------------	----------------------	------------------------	--------------------------



FRESNO, CALIFORNIA

36°47'N-119°43'W

FRESNO YOSEMITE INTL (KFAT)

Amdt 3 10OCT19

HI-LOC Z RWY 11L