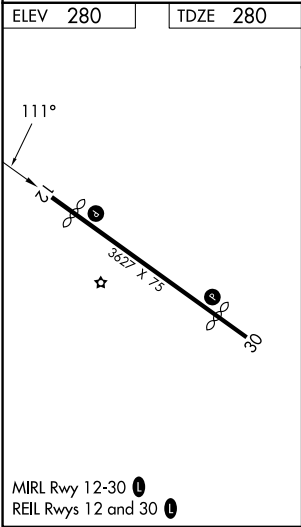
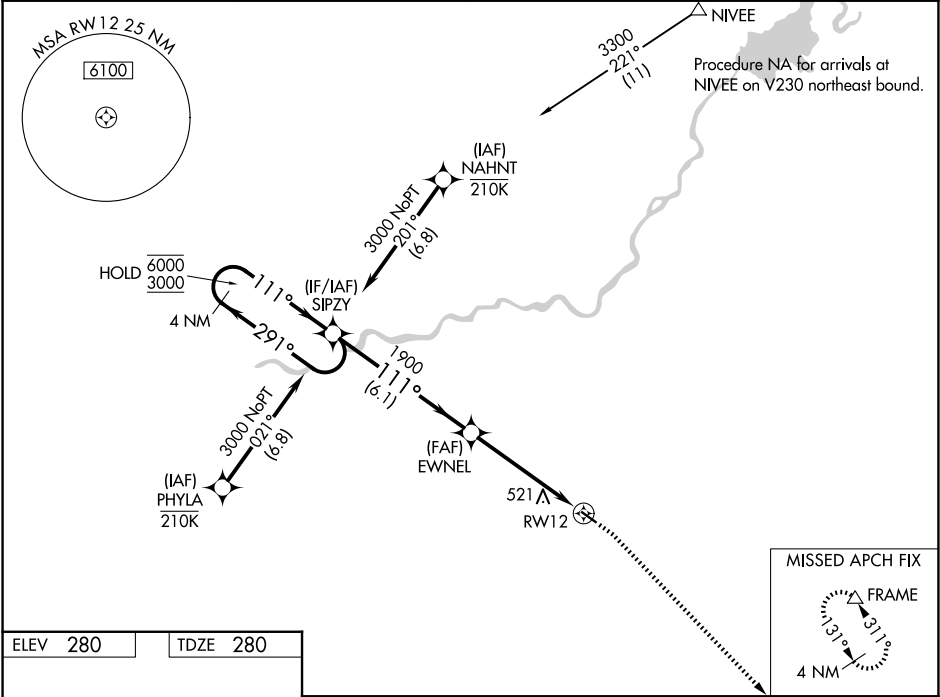


WAAS CH <b>49242</b> <b>W12A</b>	APP CRS <b>111°</b>	Rwy Ldg TDZE Apt Elev	<b>3212</b> <b>280</b> <b>280</b>
--	------------------------	-----------------------------	---

RNAV (GPS) RWY 12  
FRESNO CHANDLER EXEC (FCH)

RNP APCH-GPS.	MISSED APPROACH: Climb to 800 then climbing right turn to 2000 direct FRAME and hold.
⚠ Circling Rwy 30 NA at night. Rwy 12 helicopter visibility reduction below ¾ SM NA. ⚠ For uncompensated Baro-VNAV systems, LNAV/VNAV NA below -1° C or above 54°C.	

AWOS-3 <b>135.225</b>	FRESNO APP CON <b>119.0 323.25</b>	CLNC DEL <b>119.0</b>	UNICOM <b>123.0 (CTAF) 0</b>
--------------------------	---------------------------------------	--------------------------	---------------------------------



SIPZY 4 NM Holding Pattern				EWNEL			
6000 ← 291° 3000 111° →				1900			
GP 3.00° TCH 40				1.4 NM to RWY 12			
6.1 NM				3.5 NM			
1.4 NM				RWY 12			
CATEGORY	A	B	C	D			
LPV DA	530-1 250 (300-1)			NA			
LNAV/VNAV DA	809-1½ 529 (600-1½)			NA			
LNAV MDA	780-1	500 (500-1)	780-1⅓ 500 (500-1⅓)	NA			
CIRCLING	960-1	680 (700-1)	960-2 680 (700-2)	NA			

SW-2, 07 AUG 2025 to 04 SEP 2025

SW-2, 07 AUG 2025 to 04 SEP 2025