

FORT WORTH, TEXAS

TACAN Z RWY 18

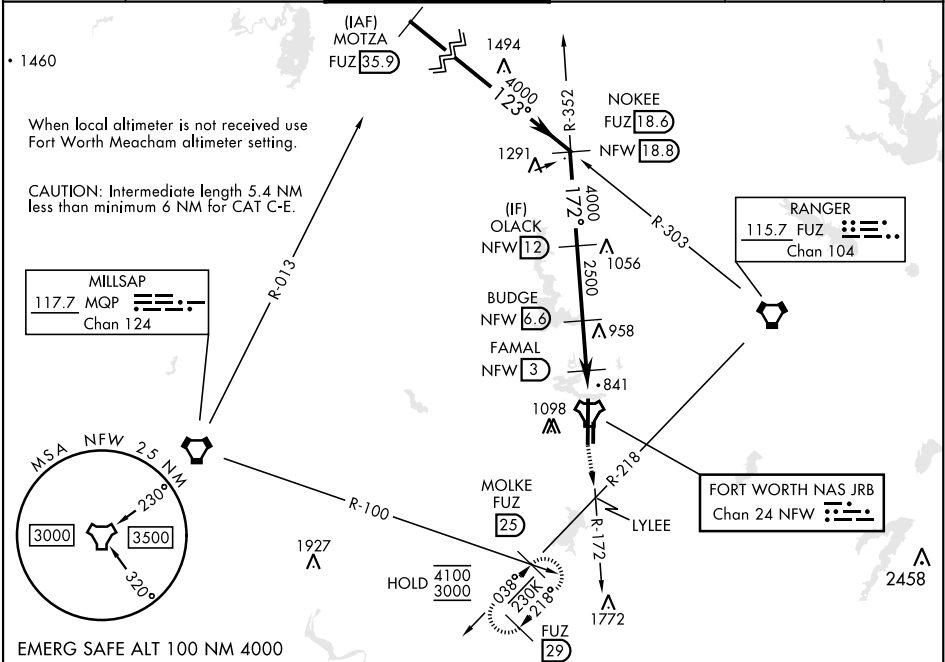
TACAN NFW Chan 24	APCH CRS 172°	Rwy Idg 11,999 TDZE 636 Arpt Elev 650
-----------------------------	-------------------------	--

[USN] FORT WORTH NAS JRB (CARSWELL FLD) (KNFW)

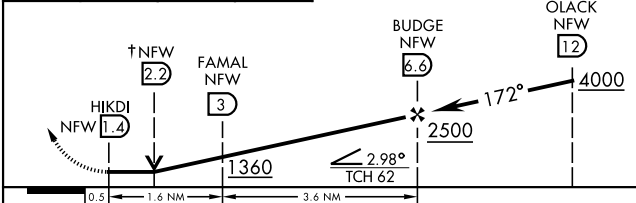
FUZ VORTAC or RADAR required.
▼ * Circling not authorized E of Rwy 18-36.

MISSED APPROACH: Climb to 3000 direct LYLEE to intercept FUZ VORTAC R-218 to MOLKE and hold.

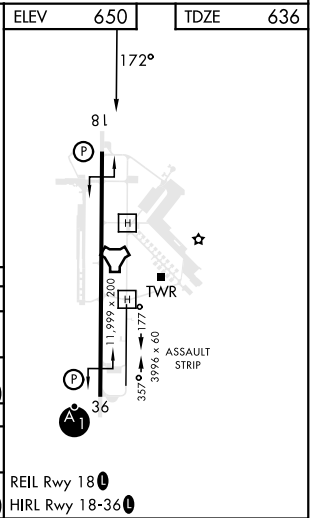
ATIS★ 351.675	LONE STAR APP CON 125.8 257.95	NAVY FORT WORTH TOWER★ 120.950 269.325	GND CON 121.675 279.575	CLNC DEL 126.4 254.325	ASR
-------------------------	--	--	-----------------------------------	----------------------------------	-----



3000 ↑	LYLEE ✕	FUZ R-218 ↶	MOLKE FUZ 25	† VDP NA when using FTW altimeter setting
-----------	------------	-------------------	--------------------	--



CATEGORY	A	B	C	D	E
S-18	1100-1 464 (500-1)		1100-1½ 464 (500-1½)		
CIRCLING*	1220-1 570 (600-1)	1320-1 670 (700-1)	1320-1¾ 670 (700-1¾)	1340-2¼ 690 (700-2¼)	1440-2¾ 790 (800-2¾)
FORT WORTH MEACHAM ALTIMETER					
S-18	1120-1 484 (500-1)		1120-1½ 484 (500-1½)		
CIRCLING*	1240-1 590 (600-1)	1340-1 690 (700-1)	1340-2 710 (700-2)	1360-2¼ 710 (800-2¼)	1460-2¾ 810 (900-2¾)



FORT WORTH, TEXAS

32°46'N-97°26'W

FORT WORTH NAS JRB (CARSWELL FLD) (KNFW)

Orig 18MAY23

TACAN Z RWY 18

SC-2, 07 AUG 2025 to 04 SEP 2025

SC-2, 07 AUG 2025 to 04 SEP 2025