

## RNAV (GPS) RWY 18

[USN] FORT WORTH NAS JRB (CARSWELL FLD) (KNFW)

WAAS CH <b>71215</b> <b>W18A</b>	APCH CRS <b>177°</b>	Rwy Idg <b>11,999</b> TDZE <b>636</b> Arpt Elev <b>650</b>
--	-------------------------	--

RNP APCH

**T** \*Circling not authorized E of Rwy 18-36.  
\*\*Baro VNAV NA when local altimeter not received.

**MISSED APPROACH:** Climb to 1700, then climbing right turn to 3000 direct MOLKE and hold.

ATIS★ 351.675	LONE STAR APP CON 125.8 257.95	NAVY FORT WORTH TOWER★ 120.950 269.325	GND CON 121.675 279.575	CLNC DEL 126.4 254.325	ASR/ PAR
------------------	-----------------------------------	---	----------------------------	---------------------------	-------------

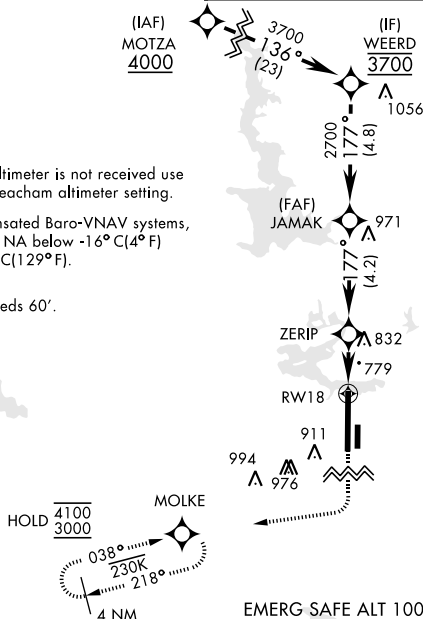
1273

When local altimeter is not received use Fort Worth Meacham altimeter setting.

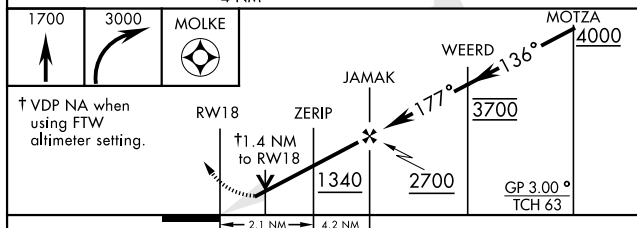
For uncompensated Baro-VNAV systems,  
LNAV/VNAV NA below -16°C (4°F)  
or above 54°C (129°F).

CAUTION:  
LPV TCH exceeds 60'.

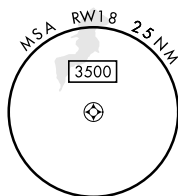
**CAUTION:** Wheel crossing height for height group 1 (53') is higher than the maximum 50'. Wheel crossing height group 1 includes general aviation, small commuters, corporate turboprops, T-38, C-12, C-20, C-21 T-1, fighter jets, UC-35, T-3, T-6 aircraft.



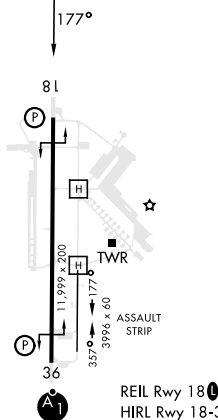
EMERG SAFE ALT 100 NM 4000



CATEGORY	A	B	C	D
LPV DA	836- $\frac{3}{4}$	200	(200- $\frac{3}{4}$ )	
LNNAV/VNAV DA**	1079-1 $\frac{3}{8}$	443	(500-1 $\frac{3}{8}$ )	
LNNAV MDA	1120-1 484 (500-1)	1120-1 $\frac{3}{8}$ 484 (500-1 $\frac{3}{8}$ )		
<b>C</b> CIRCLING*	1220-1 570 (600-1)	1320-1 670 (700-1)	1320-1 $\frac{3}{4}$ 670 (700-1 $\frac{3}{4}$ )	1340-2 $\frac{1}{4}$ 690 (700-2 $\frac{1}{4}$ )
FORT WORTH MEACHAM ALTIMETER				
LPV DA	856- $\frac{3}{4}$	220	(300- $\frac{3}{4}$ )	
LNNAV MDA	1140-1 504 (500-1)	1140-1 $\frac{3}{8}$ 504 (500-1 $\frac{3}{8}$ )		
<b>C</b> CIRCLING*	1240-1 590 (600-1)	1340-1 690 (700-1)	1340-2 690 (700-2)	1360-2 $\frac{1}{4}$ 710 (800-2 $\frac{1}{4}$ )



ELEV	650		TDZE	636
------	-----	--	------	-----



REIL Rwy 18L  
HIRL Rwy 18-3

FORT WORTH, TEXAS

32°46'N-97°26'W

FORT WORTH NAS JRB (CARSWELL FLD) (KNFW)

Amdt 2 18MAY23

RNAV (GPS) RWY 18

SC-2, 07 AUG 2025 to 04 SEP 2025