
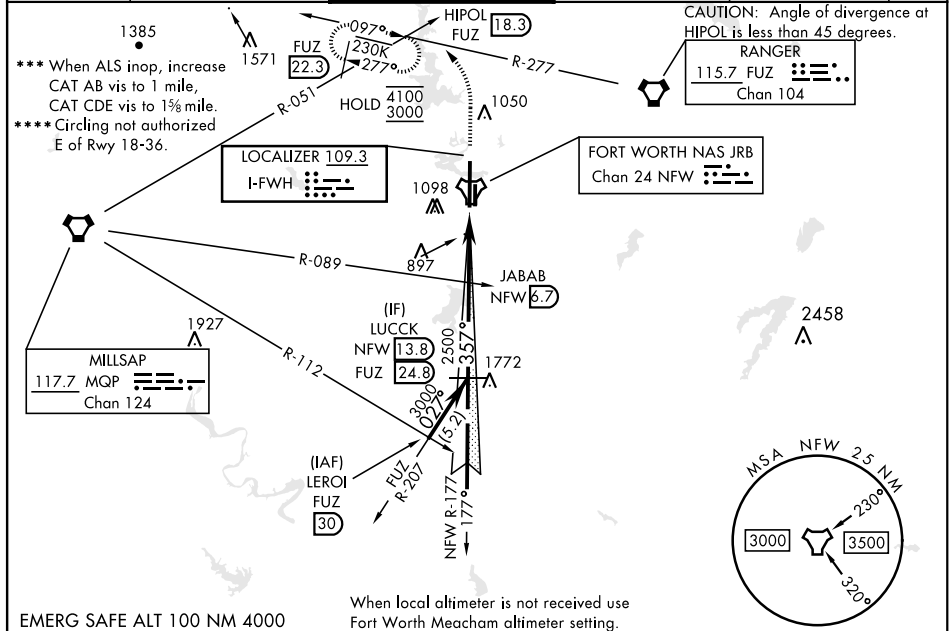


ILS Z or LOC Z RWY 36

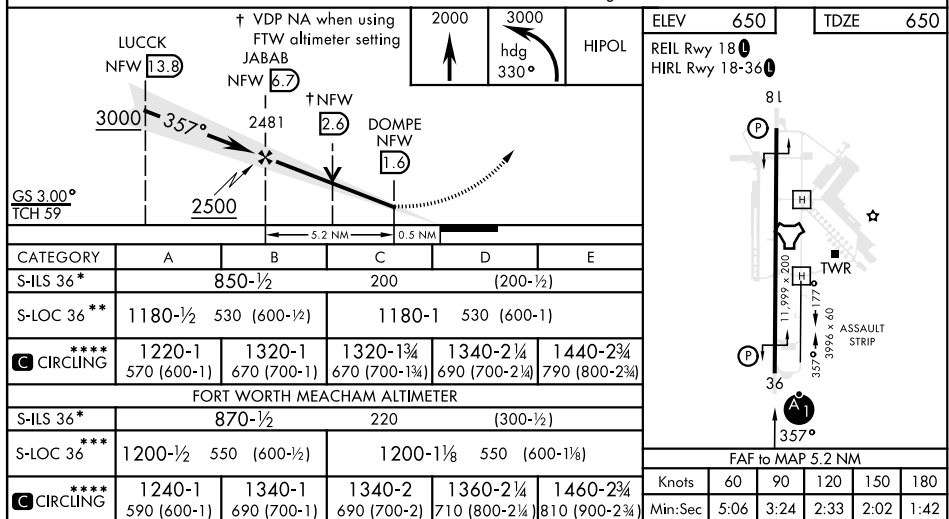
LOC I-FWH 109.3	APCH CRS 357°	Rwy Idg 11,999 TDZE 650 Arpt Elev 650	[USN]	FORT WORTH NAS JRB (CARSWELL FLD) (KNFW)
FUZ VORTAC or RADAR required.			ALSF-1 	MISSED APPROACH: Climb to 2000, then climbing left turn to 3000 heading 330° and FUZ VORTAC R-277 to HIPOL and hold. FUZ VORTAC required for missed approach.
<ul style="list-style-type: none"> * When ALS inop, increase vis to ¾ mile. ** When ALS inop, increase CAT AB vis to 1 mile, CAT CDE vis to 1½ mile. 				

ATIS★ 351.675	LONE STAR APP CON 125.8 257.95	NAVY FORT WORTH TOWER★ 120.950 269.325	GND CON 121.675 279.575	CLNC DEL 126.4 254.325	ASR/ PAR
------------------	-----------------------------------	---	----------------------------	---------------------------	-------------



EMERG SAFE ALT 100 NM 4000

When local altimeter is not received use Fort Worth Meacham altimeter setting.



FORT WORTH, TEXAS

32°46'N-97°26'W

FORT WORTH NAS JRB (CARSWELL FLD) (KNFW)

ILS Z or LOC Z RWY 36

SC-2, 07 AUG 2025 to 04 SEP 2025

SC-2, 07 AUG 2025 to 04 SEP 2025