

FORT WORTH, TEXAS

ILS Z or LOC Z RWY 18

LOC I-NFW 108.7	APCH CRS 177°	Rwy Idg 11,999 TDZE 636 Arpt Elev 650
---------------------------	-------------------------	--

[USN]

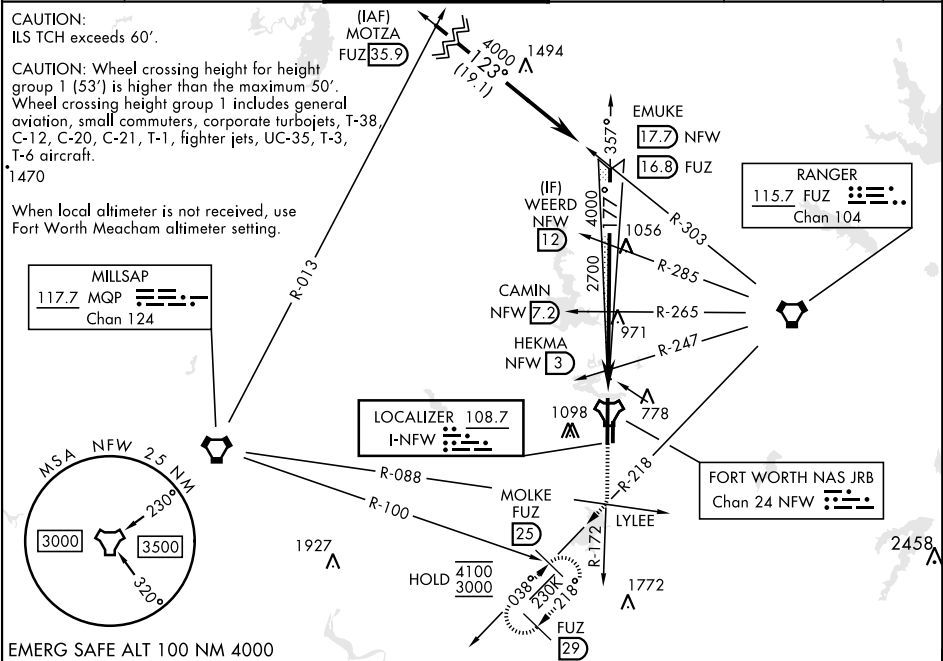
FORT WORTH NAS JRB (CARSWELL FLD) (KNFW)

FUZ VORTAC or RADAR required

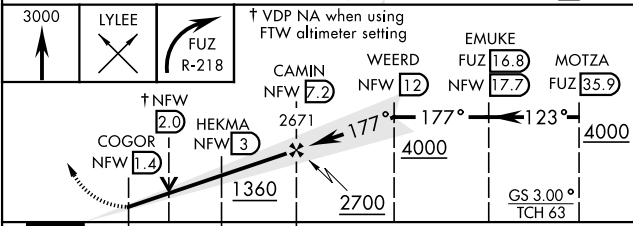
MISSED APPROACH: Climb to 3000 direct LYLEE to intercept FUZ VORTAC R-218 to MOLKE and hold.

* Circling not authorized E of Rwy 18-36.

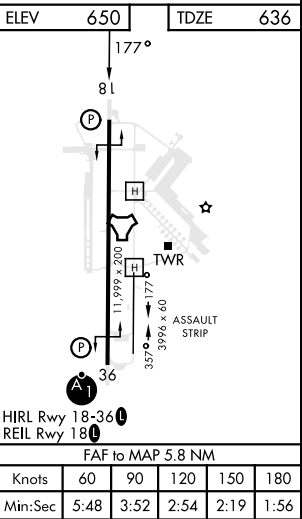
ATIS★ 351.675	LONE STAR APP CON 125.8 257.95	NAVY FORT WORTH TOWER★ 120.950 269.325	GND CON 121.675 279.575	CLNC DEL 126.4 254.325	ASR/ PAR
-------------------------	--	--	-----------------------------------	----------------------------------	-------------



EMERG SAFE ALT 100 NM 4000



CATEGORY	A	B	C	D	E
S-ILS 18	836- $\frac{3}{4}$		200		(200- $\frac{3}{4}$)
S-LOC 18	1040-1 404 (400-1)		1040-1 $\frac{1}{2}$	404 (400-1 $\frac{1}{2}$)	
CIRCLING*	1220-1 570 (600-1)	1320-1 670 (700-1)	1320-1 $\frac{3}{4}$ 670 (700-1 $\frac{3}{4}$)	1340-2 $\frac{1}{4}$ 690 (700-2 $\frac{1}{4}$)	1440-2 $\frac{3}{4}$ 790 (800-2 $\frac{3}{4}$)
FORT WORTH MEACHAM ALTIMETER					
S-ILS 18	856- $\frac{3}{4}$		220		(300- $\frac{3}{4}$)
S-LOC 18	1060-1 424 (500-1)		1060-1 $\frac{1}{4}$	424 (500-1 $\frac{1}{4}$)	
CIRCLING*	1240-1 590 (600-1)	1340-1 690 (700-1)	1340-2 690 (700-2)	1360-2 $\frac{1}{4}$ 710 (800-2 $\frac{1}{4}$)	1460-2 $\frac{3}{4}$ 810 (900-2 $\frac{3}{4}$)



FORT WORTH, TEXAS

32°46'N-97°26'W

FORT WORTH NAS JRB (CARSWELL FLD) (KNFW)

Orig 18MAY23

ILS Z or LOC Z RWY 18

SC-2, 07 AUG 2025 to 04 SEP 2025