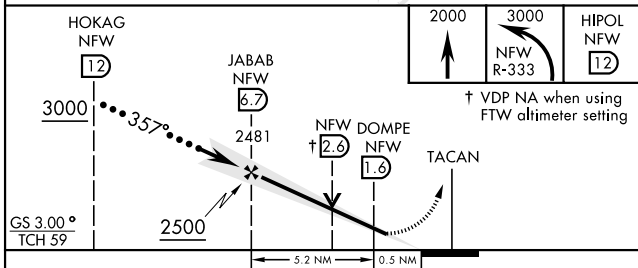
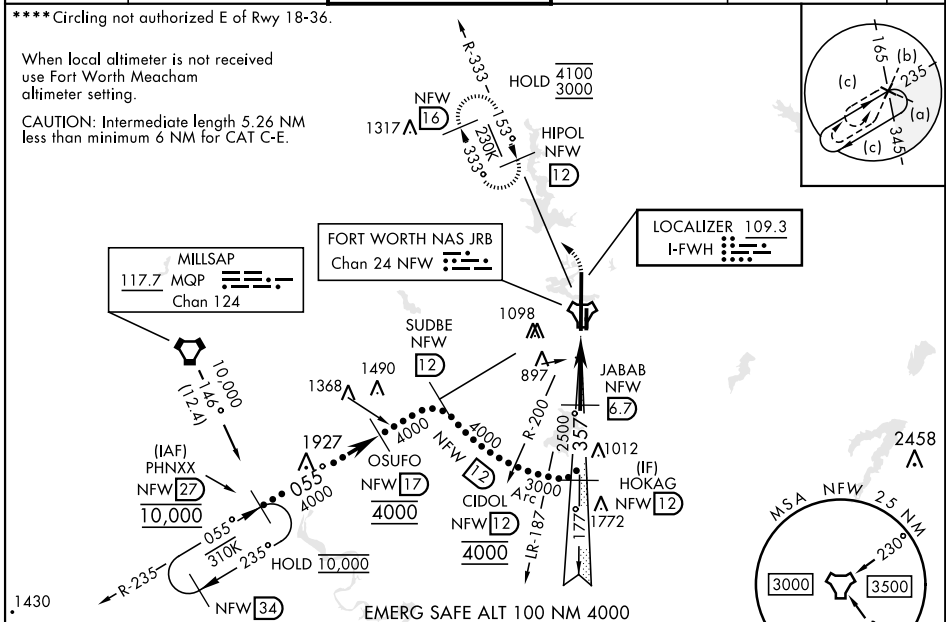


# HI-ILS Y or LOC Y RWY 36

LOC I-FWH <b>109.3</b>	APCH CRS <b>357°</b>	Rwy Idg <b>11,999</b> TDZE <b>650</b> Arpt Elev <b>650</b>	[USN]	FORT WORTH NAS JRB (CARSWELL FLD) (KNFW)
TACAN required * When ALS inop, increase vis to ¾ mile. ** When ALS inop, increase vis to 1½ miles. *** When ALS inop, increase vis to 1¾ miles.			ALSF-1	MISSED APPROACH: Climb to 2000, then climbing left turn to 3000 to intercept NFW TACAN R-333 to HIPOL and hold.

ATIS★ <b>351.675</b>	LONE STAR APP CON <b>125.8 257.95</b>	NAVY FORT WORTH TOWER★ <b>120.950 269.325</b>	GND CON <b>121.675 279.575</b>	CLNC DEL <b>126.4 254.325</b>	ASR/ PAR
-------------------------	--	--	-----------------------------------	----------------------------------	-------------



CATEGORY	C	D	E
S-ILS 36*	850-½	200	(200-½)
S-LOC 36**	1180-1	530	(600-1)
CIRCLING	1320-1¾ 670 (700-1¾)	1340-2¼ 690 (700-2¼)	1440-2¾ 790 (800-2¾)
FORT WORTH MEACHAM ALTIMETER			
S-ILS 36*	870-½	220	(300-½)
S-LOC 36***	1200-1½	550	(600-1½)
CIRCLING	1340-2 690 (700-2)	1360-2¼ 710 (800-2¼)	1460-2¾ 810 (900-2¾)

ELEV	650	TDZE	650		
		REIL Rwy 18-0 HIRL Rwy 18-36-0			
FAF to MAP 5.2 NM					
Knots	120	140	160	180	200
Min:Sec	2:33	2:11	1:55	1:42	1:32

# HI-ILS Y or LOC Y RWY 36