

VOR OLK  
**110.4**

APP CRS  
**114°**

Rwy Ldg  
TDZE  
Apt Elev  
**2623**  
**836**  
**836**

VOR RWY 13  
SMITH FLD (SMD)

▼

⚠

NA

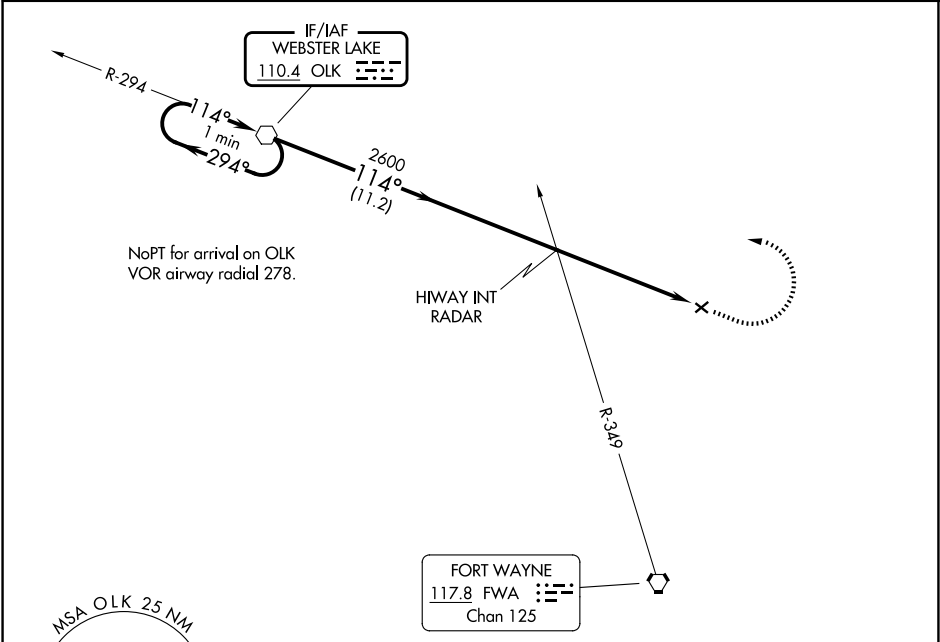
⚡

-22°C

Rwy 13 helicopter visibility reduction below 1 SM NA. Procedure NA at night. When local altimeter setting not received, use Fort Wayne Intl altimeter setting and increase all MDA 40 feet and S-13 Cat C visibility 1/8 SM.

MISSED APPROACH: Climb to 1900 then climbing left turn to 2700 direct OLK VOR and hold.

AWOS-3 <b>124.55</b>	FORT WAYNE APP CON <b>127.2 284.6</b>	UNICOM <b>122.8 (CTAF) 0</b>
-------------------------	------------------------------------------	---------------------------------



One Minute Holding Pattern

OLK VOR

1900

2700

OLK

2700

294°

114°

114°

2600

3.00°

TCH 40

11.2 NM

5.4 NM

CATEGORY	A	B	C	D
S-13	1360-1	524 (600-1)	1360-1½ 524 (600-1½)	NA
CIRCLING	1400-1	564 (600-1)	1940-3 1104 (1200-3)	NA

ELEV 836

TDZE 836

114°

3126 X 100

2922 X 60

MIRL Rwy 5-23 and 13-31 0

FAF to MAP 5.4 NM

Knots	60	90	120	150	180
Min:Sec	5:24	3:36	2:42	2:10	1:48

EC-2, 07 AUG 2025 to 04 SEP 2025

EC-2, 07 AUG 2025 to 04 SEP 2025