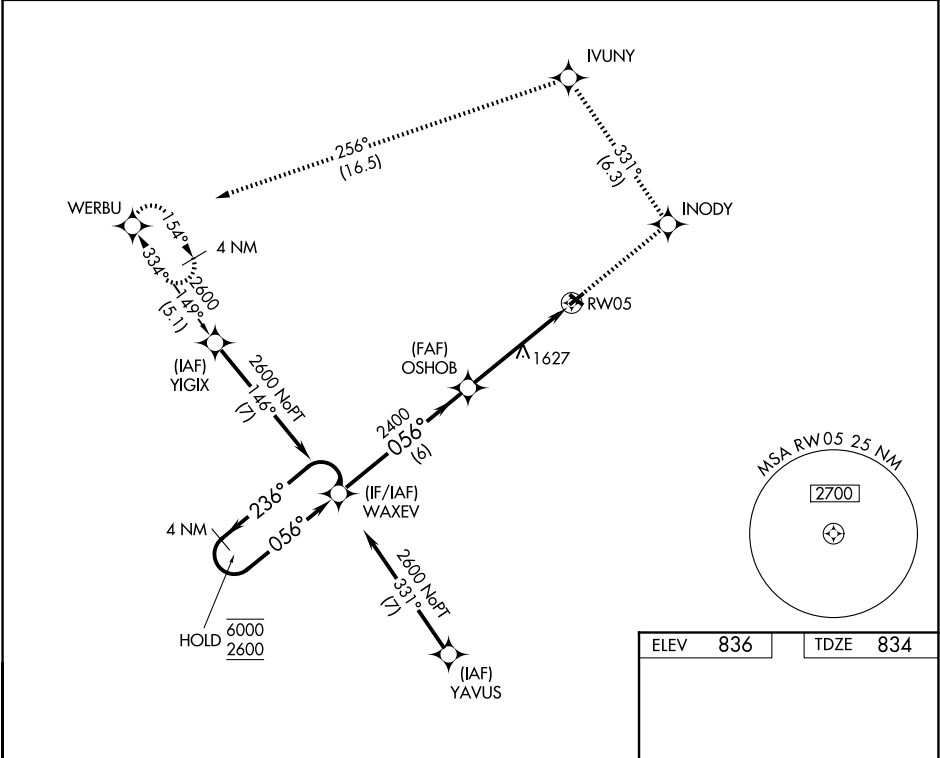


APP CRS	Rwy Ldg	2925
056°	TDZE	834
	Apt Elev	836

RNAV (GPS) RWY 5

SMITH FLD (SMD)

RNP APCH - GPS.		MISSED APPROACH: Climb to 2700 direct INODY and on track 331° to IVUNY and on track 256° to WERBU and hold.
<div><div>▼</div><div>▲</div><div>NA</div><div>❄</div></div> <div>Rwy 5 helicopter visibility reduction below ¾ NA. Circling to Rwy 13/31 NA at night. When local altimeter setting not received, use FWA altimeter setting and increase all MDAs 40 feet. VDP NA with FWA altimeter setting.</div>	AWOS-3 124.55	FORT WAYNE APP CON 127.2 284.6
		UNICOM 122.8 (CTAF) 0



4 NM Holding Pattern		2700 ↑	INODY ✧	tr 331°	IVUNY ✧	tr 256°	WERBU ✧
WAXEV		Visual Segment - Obstacles.					
6000 ← 236° 2600 → 056°							
VGSIs and descent angles not coincident (VGSIs Angle 4.00/TCH 43).							
CATEGORY	A	B	C	D			
LNAV MDA	1880-1¼ 1046 (1100-1¼)	1880-1½ 1046 (1100-1½)	1880-3 1046 (1100-3)	NA			
CIRCLING	1880-1¼ 1044 (1100-1¼)	1880-1½ 1044 (1100-1½)	1940-3 1104 (1200-3)	NA			