

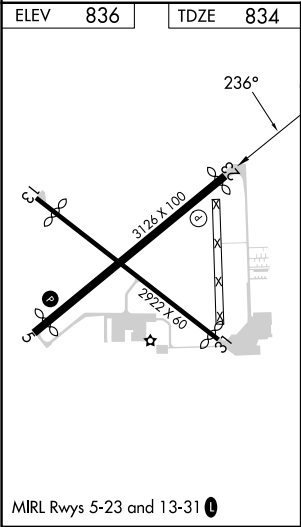
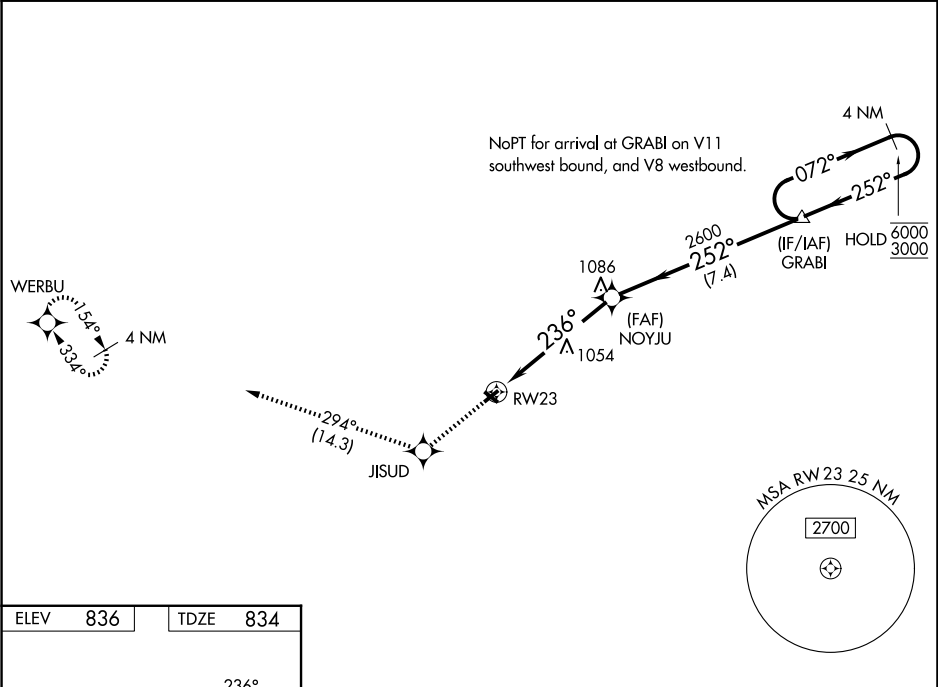
WAAS CH <b>65738</b> <b>W23A</b>	APP CRS <b>236°</b>	Rwy Ldg TDZE <b>834</b> Apt Elev <b>836</b>
----------------------------------------	------------------------	---------------------------------------------------

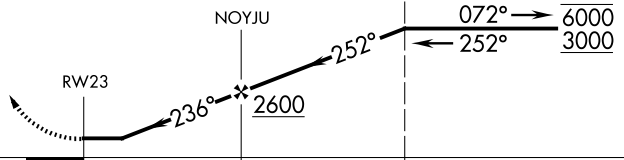
RNAV (GPS) RWY 23

SMITH FLD (SMD)

RNP APCH - GPS.		MISSED APPROACH: Climb to 2700 direct JISUD and on track 294° to WERBU and hold.
▼ ▲ NA ❄ -22°C Rwy 23 helicopter visibility reduction below 1 SM NA. Circling to Rwy 13/31 NA at night. When local altimeter setting not received, use FWA altimeter setting and increase all MDAs 40 feet and LNAV visibility Cat C ½ SM and LP visibility Cat C ½ SM.		

AWOS-3 <b>124.55</b>	FORT WAYNE APP CON <b>127.2 284.6</b>	UNICOM <b>122.8 (CTAF) 0</b>
-------------------------	------------------------------------------	---------------------------------



2700 ↑		JISUD ✧		tr 294°		WERBU ✧		Visual Segment - Obstacles.		4 NM Holding Pattern	
											
CATEGORY		A		B		C		D			
LP	MDA	1360-1		526 (600-1)		1360-1½ 526 (600-1½)				NA	
LNAV	MDA	1400-1		566 (600-1)		1400-1⅝ 566 (600-1⅝)				NA	
CIRCLING		1400-1		564 (600-1)		1940-3 1104 (1200-3)				NA	