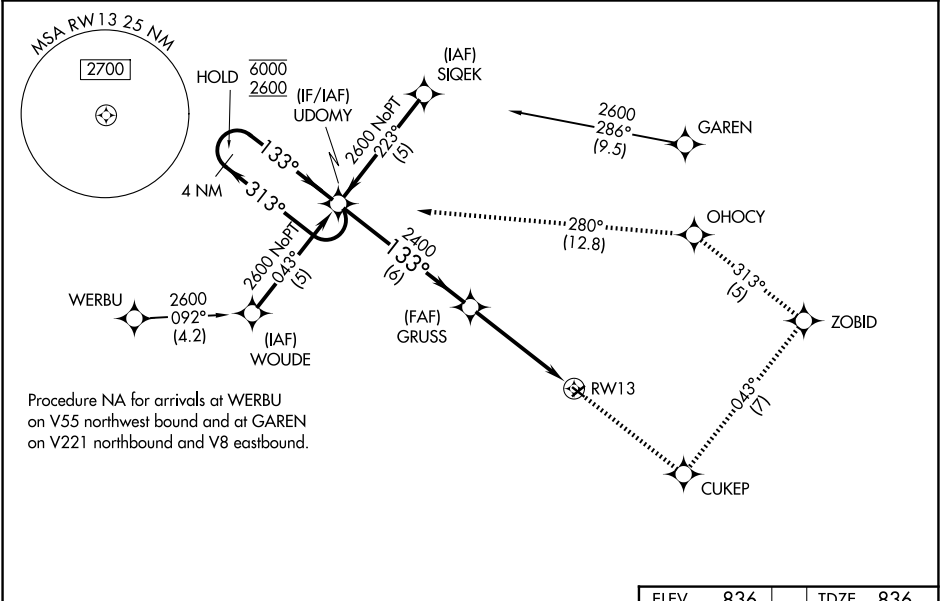


WAAS CH <b>69220</b> <b>W13A</b>	APP CRS <b>133°</b>	Rwy Ldg TDZE <b>836</b> Apt Elev <b>836</b>
--	------------------------	---

RNAV (GPS) RWY 13

SMITH FLD (SMD)

RNP APCH. ▼ NA -22°C Procedure NA at night. Rwy 13 helicopter visibility reduction below 1 SM NA. For uncompensated Baro-VNAV systems, LNAV/VNAV NA below -16°C or above 54°C. When local altimeter setting not received, use Fort Wayne Intl altimeter setting: increase LPV DA to 1162 feet; LNAV/VNAV DA to 1435 feet; increase all MDA 40 feet and LNAV Cat C visibility ¼ SM. Baro-VNAV NA when using Fort Wayne Intl altimeter setting.		MISSED APPROACH: Climb to 2600 direct CUKEP and on track 043° to ZOBID and on track 313° to OHOCY and on track 280° to UDOMY and hold.
AWOS-3 <b>124.55</b>	FORT WAYNE APP CON <b>127.2 284.6</b>	UNICOM <b>122.8 (CTAF) 0</b>



<div>4 NM Holding Pattern</div> <div>UDOMY</div> <div><div>6000 ← 313°</div><div>2600 → 133°</div><div>GP 3.00° TCH 40</div></div> <div><div>GRUSS</div><div>2400</div><div>2400</div><div>RW13</div></div> <div><div>6 NM</div><div>4.7 NM</div></div>					<div>ELEV 836</div> <div>TDZE 836</div>
<div>2600 ↑</div> <div>CUKEP</div> <div>tr 043°</div> <div>ZOBID</div> <div>tr 313°</div> <div>OHOCY</div> <div>tr 280°</div> <div>UDOMY</div>					
CATEGORY	A	B	C	D	
LPV DA	1135-1 299 (300-1)			NA	
LNAV/VNAV DA	1408-2 572 (600-2)			NA	
LNAV MDA	1340-1	504 (600-1)	1340-1½ 504 (600-1½)	NA	
CIRCLING	1400-1	564 (600-1)	1940-3 1104 (1200-3)	NA	
					MIRL Rwy 5-23 and 13-31 0