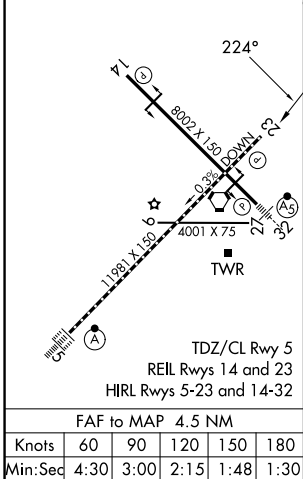
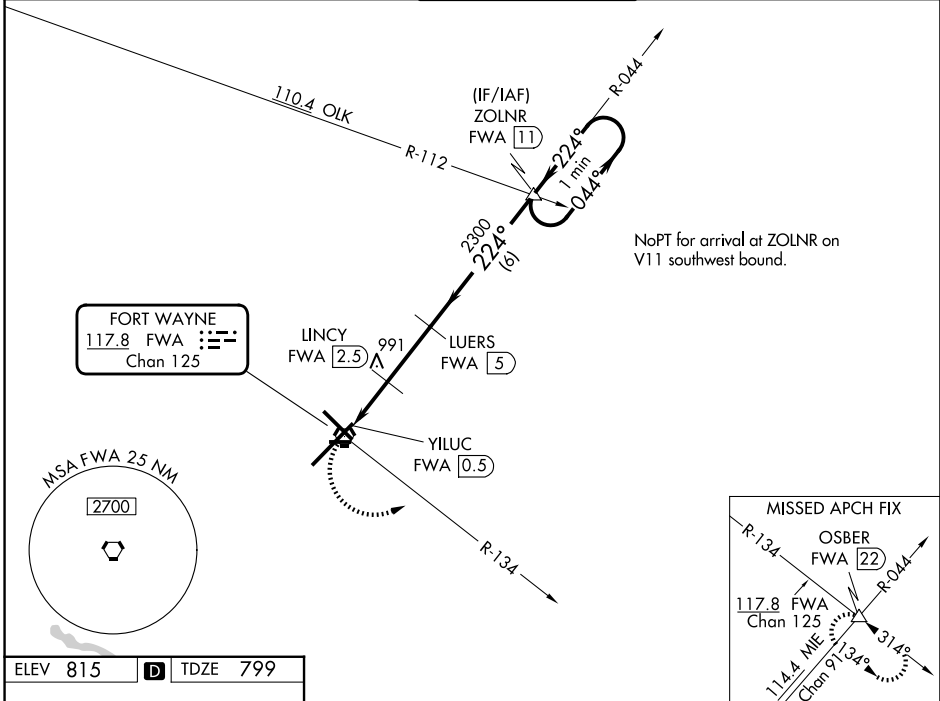


VORTAC FWA	APP CRS	Rwy Ldg
117.8	224°	11981
Chan 125		TDZE 799
		Apt Elev 815

VOR or TACAN RWY 23
FORT WAYNE INTL (FWA)

MISSED APPROACH: Climbing left turn to 3000 on FWA VORTAC R-134 to OSBER INT/FWA 22 DME and hold.	
ATIS	FORT WAYNE APP CON
121.25 360.825	127.2 284.6
FORT WAYNE TOWER	GND CON
119.1 269.325	121.9 348.6
CLNC DEL	
124.75	



<div>3000 FWA R-134</div> <div>OSBER △</div>		<div>LUERS FWA ⑤</div> <div>ZOLNR FWA ⑪</div> <div>One Minute Holding Pattern</div>			
<div>YILUC FWA ①.8</div> <div>FWA ①.8</div> <div>③.04° TCH 55</div>		<div>②22°</div> <div>②22°</div> <div>②044°</div> <div>②3000</div> <div>VGSI and descent angles not coincident (VGSI Angle 3.00/TCH 76).</div>			
CATEGORY	A	B	C	D	E
S-23	1400/55	601 (600-1)	1400-1¾	601 (600-1¾)	
CIRCLING	1400-1	585 (600-1)	1420-1¾ 605 (700-1¾)	1520-2¼ 705 (800-2¼)	1520-2½ 705 (800-2½)
LINCYN FIX MINIMUMS					
S-23	1300/55	501 (500-1)	1300-1⅜	501 (500-1⅜)	
CIRCLING	1300-1	485 (500-1)	1420-1¾ 605 (700-1¾)	1520-2¼ 705 (800-2¼)	1520-2½ 705 (800-2½)