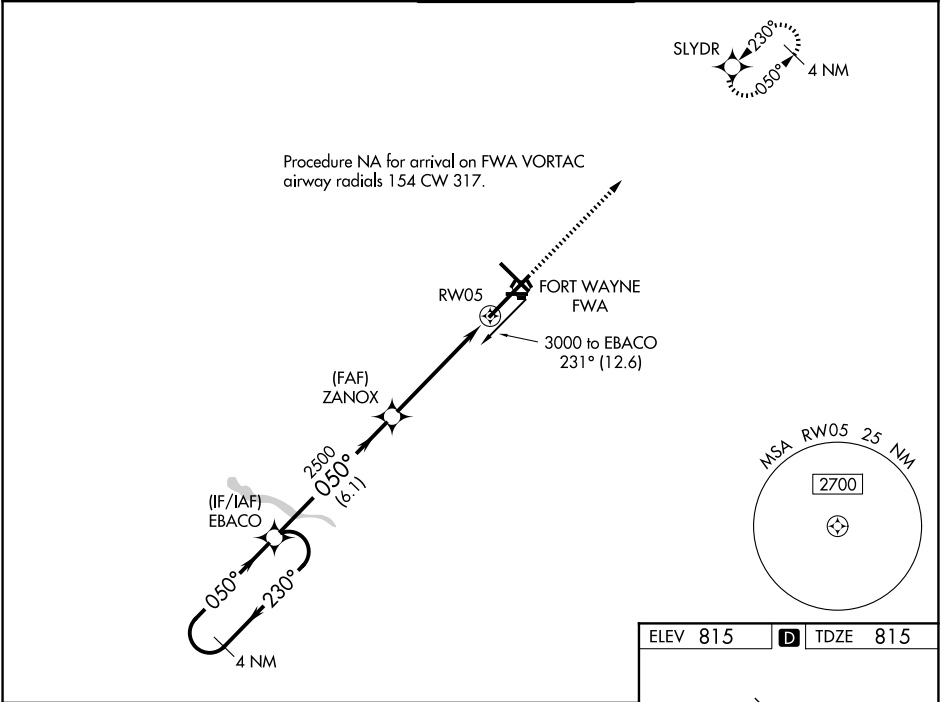


WAAS CH <b>93609</b> <b>W05A</b>	APP CRS <b>050°</b>	Rwy Ldg <b>11981</b> TDZE <b>815</b> Apt Elev <b>815</b>
--	------------------------	--

RNAV (GPS) RWY 5

FORT WAYNE INTL (FWA)

<div><div>▼</div><div>ASR</div></div> <div>For uncompensated Baro-VNAV systems, procedure NA below -16°C (4°F) or above 47°C (116°F). DME/DME RNP-0.3 NA. For inop ALS, increase LPV Cat E visibility to RVR 4000, LNAV/VNAV all Cats visibility to 1½ SM and LNAV Cat C/D/E visibility to 1¾ SM.</div>	<div>ALSF-2</div> <div><div><div>Ⓐ</div></div><div><div></div></div></div>	<div>MISSED APPROACH:</div> <div>Climb to 3000 direct SLYDR and hold.</div>	<div>ATIS</div> <div><b>121.25 360.825</b></div>	<div>FORT WAYNE APP CON</div> <div><b>127.2 284.6</b></div>	<div>FORT WAYNE TOWER</div> <div><b>119.1 269.325</b></div>	<div>GND CON</div> <div><b>121.9 348.6</b></div>	<div>CLNC DEL</div> <div><b>124.75</b></div>
---	--	---	--	---	---	--	--



<div>4 NM Holding Pattern</div> <div>EBACO</div> <div>ZANOX</div> <div>3000</div> <div>230°</div> <div>050°</div> <div>050°</div> <div>2500</div> <div>2500</div> <div>6.1 NM</div> <div>3.7 NM</div> <div>1.4 NM</div> <div>GP 3.00°</div> <div>TCH 55</div> <div>* 1.4 NM to RW05</div> <div>RW05</div> <div>3000</div> <div>↑</div> <div>SLYDR</div> <div>* LNAV only.</div>					
CATEGORY	A	B	C	D	E
LPV DA	1065/18 250 (300-½)				
LNAV/VNAV DA	1275/60 460 (500-¼)				
LNAV MDA	1300/24	485 (500-½)	1300/50 485 (500-1)		
CIRCLING	1300-1	485 (500-1)	1420-1¾ 605 (700-1¾)	1520-2¼ 705 (800-2¼)	1520-2½ 705 (800-2½)